

Genetic Analysis of Collagen Q: Roles in Acetylcholinesterase and Butyrylcholinesterase Assembly and in Synaptic Structure and Function

Guoping Feng,* Eric Krejci,† Jordi Molgo,§ Jeanette M. Cunningham,* Jean Massoulié,‡ and Joshua R. Sanes*

*Department of Anatomy and Neurobiology, Washington University Medical School, St. Louis, Missouri 63110; †Laboratoire de Neurobiologie Cellulaire et Moléculaire, Ecole Normale Supérieure, 75005 Paris, France; and §Laboratoire de Neurobiologie Cellulaire et Moléculaire, UPR9040, CNRS, 91198 Gif-sur-Yvette, France

Abstract. Acetylcholinesterase (AChE) occurs in both asymmetric forms, covalently associated with a collagenous subunit called Q (ColQ), and globular forms that may be either soluble or membrane associated. At the skeletal neuromuscular junction, asymmetric AChE is anchored to the basal lamina of the synaptic cleft, where it hydrolyzes acetylcholine to terminate synaptic transmission. AChE has also been hypothesized to play developmental roles in the nervous system, and ColQ is also expressed in some AChE-poor tissues. To seek roles of ColQ and AChE at synapses and elsewhere, we generated ColQ-deficient mutant mice. *ColQ*^{-/-} mice completely lacked asymmetric AChE in skeletal and cardiac muscles and brain; they also lacked asymmetric forms of the AChE homologue, butyrylcholinesterase. Thus, products of the *ColQ* gene are required for assembly of all detectable asymmetric AChE and butyrylcholinesterase. Surprisingly, globular AChE tetramers were also absent from neonatal *ColQ*^{-/-} muscles, suggesting a role for the *ColQ* gene in assembly or stabil-

ization of AChE forms that do not themselves contain a collagenous subunit. Histochemical, immunohistochemical, toxicological, and electrophysiological assays all indicated absence of AChE at *ColQ*^{-/-} neuromuscular junctions. Nonetheless, neuromuscular function was initially robust, demonstrating that AChE and ColQ do not play obligatory roles in early phases of synaptogenesis. Moreover, because acute inhibition of synaptic AChE is fatal to normal animals, there must be compensatory mechanisms in the mutant that allow the synapse to function in the chronic absence of AChE. One structural mechanism appears to be a partial ensheathment of nerve terminals by Schwann cells. Compensation was incomplete, however, as animals lacking ColQ and synaptic AChE failed to thrive and most died before they reached maturity.

Key words: acetylcholine • acetylcholinesterase • butyrylcholinesterase • collagen • neuromuscular junction

ACETYLCHOLINESTERASE (AChE)¹ is concentrated in the synaptic cleft of the skeletal neuromuscular junction. Acetylcholine released from motor nerve terminals is rapidly inactivated by the synaptic AChE, thereby limiting the action of the neurotransmitter. The importance of the enzyme is demonstrated by the effects

of blocking its activity. Inhibition of AChE, for example by nerve gas, causes prolonged activation of acetylcholine receptors (AChRs), leading to desensitization of the receptors, respiratory paralysis, and death. Partial inhibition of AChE, for example by overexposure to insecticides, results in excessive influx of calcium through the AChR's ion channel, which leads to local necrotic myopathy (Leonard and Salpeter, 1979; Wecker et al., 1986). On the other hand, inhibitors of AChE are therapeutically useful to patients with diseases of inadequate neurotransmission in which levels of AChRs are decreased (such as acquired autoimmune myasthenia gravis; Engel, 1994a) or insufficient acetylcholine is released (such as familial infantile myasthenia; Engel, 1994b).

Although the function of AChE is apparently simple, its patterns of structure and distribution are remarkably com-

G. Feng and E. Krejci contributed equally to this work.

Address correspondence to Joshua Sanes, Department of Anatomy and Neurobiology, Washington University Medical School, 660 S. Euclid Avenue, Campus Box 8108, St. Louis, MO 63110. Tel.: (314) 362-2507. Fax: (314) 747-1150. E-mail: sanesj@thalamus.wustl.edu

1. *Abbreviations used in this paper:* AChE, acetylcholinesterase; AChR, acetylcholine receptor; BuChE, butyrylcholinesterase; ColQ, collagen Q; DS, detergent-soluble; ES cells, embryonic stem cells; HS, high-salt; LS, low-salt; mepps, miniature endplate potentials; PRAD, proline-rich attachment domain; VVA-B4, *Vicia villosa* agglutinin-B4.

plex. First, the transcript of the AChE gene is subject to alternative splicing and its protein products can associate covalently with each other and with noncatalytic subunits (for review see Massoulié et al., 1993, 1998). Second, the oligomers can occur in cytoplasmic, membrane-bound and extracellular matrix-associated forms (for review see Massoulié and Bon, 1982; Toutant and Massoulié, 1988). Third, AChE is found not only at neuromuscular junctions, but also at cholinergic interneuronal synapses, in some noncholinergic neurons, and in some nonneural cells such as erythrocytes (Massoulié et al., 1993). Fourth, a related enzyme, butyrylcholinesterase (BuChE), capable of hydrolyzing acetylcholine, is expressed in some of the same sites as AChE, including the neuromuscular junction (for review see Chatonnet and Lockridge, 1989). Based in part on their complex patterns of expression in embryos and adults, AChE and BuChE have been hypothesized to play a variety of noncholinergic and even noncatalytic roles in embryos and adults (for review see Layer and Willbold, 1995).

Much of the AChE at the neuromuscular junction occurs in forms that have been called asymmetric. Asymmetric forms of AChE were initially identified in *Torpedo* and *Electrophorus* electric organ; they were defined and distinguished from the remaining (globular) forms by virtue of their anomalous sedimentation properties in sucrose density gradients. The asymmetry was shown to reflect the association of catalytic AChE subunits with a tail that was rod-shaped, collagenase-sensitive, and rich in amino acids characteristic of collagens (hydroxyproline and hydroxylysine; Lwebuga-Mukasa et al., 1976; Rosenberry and Richardson, 1977). Three asymmetric forms of AChE were characterized, in which one, two, or three tetramers of catalytic subunits (now called AChE_T) were disulfide-bonded to a single collagenous triple helical tail. These forms are called A₄, A₈, and A₁₂, to indicate the total number of catalytic subunits per oligomer (Massoulié and Bon, 1982).

Hall (1973) showed that asymmetric forms of AChE were selectively associated with synapse-containing regions of rodent skeletal muscle, whereas globular forms were more uniformly distributed. Later, it was found that synaptic AChE was stably associated with the basal lamina that runs between the motor nerve terminal and the postsynaptic membrane at the neuromuscular junction (McMahan et al., 1978; Sanes and Hall, 1979). The collagen tail of asymmetric AChE is likely to be critical for anchoring the enzyme to the basal lamina, perhaps by association with proteoglycans (Bon et al., 1978; Vigny et al., 1983; Brandan et al., 1985; Deprez and Inestrosa, 1995; Rossi and Rotundo, 1996; Rotundo et al., 1997). However, the relationship of asymmetric AChE to the synapse is not completely understood in that some synaptic AChE may be globular (Anglister et al., 1994) and some asymmetric AChE is found extrasynaptically (Carson et al., 1979; Younkin et al., 1982; Sketelj and Brzin, 1985).

Structural and functional analyses of the asymmetric and synaptic forms of AChE were delayed by the difficulty of isolating its collagenous subunit. Recently, however, cDNAs encoding an AChE-associated collagenous subunit called Q (ColQ) were molecularly cloned from rat muscle (Krejci et al., 1997), based on homology to a previously isolated Q subunit from *Torpedo* (Krejci et al.,

1991). Antibodies to recombinant ColQ recognize native asymmetric AChE and BuChE, and coexpression of cDNAs encoding ColQ and AChE_T generates asymmetric AChE in heterologous cells (Krejci et al., 1997). Assembly of asymmetric AChE involves interaction of a proline-rich attachment domain (PRAD) in ColQ with a tryptophan amphiphilic tetramerization domain in AChE_T (Bon et al., 1997; Krejci et al., 1997; Simon et al., 1998). Alternatively spliced products of the *ColQ* gene that encode a PRAD but no collagenous domain have been described; they may organize other AChE isoforms or interact with other proteins. In fact, *ColQ* RNA is expressed in many tissues with little or no asymmetric AChE, suggesting that it may have additional roles (Krejci et al., 1997).

Here, we have used homologous recombination in embryonic stem (ES) cells to inactivate the *ColQ* gene in mice, thereby allowing us to assess roles of the ColQ protein in vivo. Using a combination of biochemical, histological, and electrophysiological methods, we answered the following questions. Does asymmetric AChE in muscle require ColQ protein for assembly or accumulation? Are only asymmetric forms of AChE ColQ-dependent? How much of the AChE concentrated at the neuromuscular junction is ColQ-dependent? Does asymmetric BuChE require the ColQ gene product? How does loss of ColQ affect the structure and function of the neuromuscular junction? Is AChE or ColQ required for proper neuromuscular development? Is ColQ required for the structure or function of nonmuscle tissues?

Materials and Methods

Generation of Mutant Mice

Genomic clones containing the *ColQ* gene were isolated by screening a 129sv strain mouse genomic library (Stratagene) with cDNAs encoding rat ColQ (Krejci et al., 1997). For targeting vector PRAD1 (Fig. 1 a), a 0.8-kb EcoRI-HindIII fragment containing the exon encoding the PRAD domain as well as adjacent intronic sequences was replaced by a PGK-*neo* cassette (Tybulewicz et al., 1991). For targeting vector PRAD2 (Fig. 1 a), a 0.6-kb HindIII fragment containing the PRAD exon was replaced by a cassette containing *neo* plus the *Escherichia coli lacZ* gene, for monitoring gene expression. The PRAD2 vector also contained a diphtheria toxin-A gene for negative selection (Yagi et al., 1990). Both constructs were transfected into R1 ES cells (Nagy et al., 1993) by electroporation. Homologous recombinants were identified by PCR and confirmed by probing genomic Southern blots with an 0.8-kb fragment of the *ColQ* gene that was entirely external to the targeting vector (Fig. 1 a). Chimeric mice from one PRAD1 and two PRAD2 ES cell clones gave rise to heterozygous and then homozygous mutant mice. The PRAD2 vector contained a *lacZ* gene, but no β -galactosidase activity was detected in heterozygotes, either histochemically or immunohistochemically.

Histology

For immunohistochemistry, sternomastoid and tibialis anterior muscles were embedded in Tissue-Tek OCT compound (Sakura Finetek USA), frozen in liquid nitrogen-cooled isopentane, and sectioned at 10 μ m in a cryostat. Sections were blocked for 1 h with 2% BSA and 5% normal goat serum in PBS, incubated with primary antibodies for 1–2 h, washed, and then reincubated with secondary antibodies for another 1–2 h. Antibodies to the following antigens were used: ColQ (Krejci et al., 1997), AChE (a gift of Terrone Rosenberry, Mayo Clinic), α -sarcoglycan, β -dystroglycan, utrophin (Novocastra Laboratories Ltd.), rapsyn (Phillips et al., 1991), and agrin (a gift of Z. Hall, University of California, San Francisco). FITC-conjugated *Vicia villosa* agglutinin-B4 (VVA-B4) was obtained from Sigma Chemical Co. and rhodamine- α -bungarotoxin was obtained from Molecular Probes.

a 2-ml bath lined with Rhodorsil (Rhône-Poulenc) and superfused with saline of the following composition: 154 mM NaCl, 5 mM KCl, 2 mM CaCl_2 , 1 mM MgCl_2 , 5 mM HEPES, pH 7.4, and 11 mM glucose. The solution was bubbled with pure O_2 .

The membrane potential and miniature endplate potentials (mepps) were recorded from endplate regions at room temperature (22–24°C) with intracellular microelectrodes filled with 3 M KCl (resistance of 16–26 M Ω), using conventional techniques and an Axoclamp-2A system (Axon Instruments). Recordings were made continuously from the same endplate before and throughout application of the cholinesterase inhibitors tested. Data were digitized and analyzed using a computer equipped with an analogue and digital I/O interface board (DT2821; Data Translation) and a program kindly provided by Dr. John Dempster (University of Strathclyde, Scotland). Mepps were analyzed individually for amplitude and time course.

Results

Generation of a *ColQ* Mutant

Clones encoding the *ColQ* gene were isolated from a genomic library and used to produce two targeting vectors, PRAD1 and PRAD2 (Fig. 1 a). Both vectors deleted the PRAD domain of *ColQ*, which forms the binding site for the catalytic (AChE_T) subunits of AChE (Bon et al., 1997). Both targeting vectors gave rise to homologous recombinant ES cells, germline chimeras, heterozygotes, and homozygotes (Fig. 1, b and c). Phenotypes of PRAD1 and PRAD2 homozygotes were identical, so both are called *ColQ*^{-/-} and described together here.

Homozygous *ColQ*^{-/-} mice were born in expected numbers, and were externally indistinguishable from heterozygous (*ColQ*^{+/-}) and wild-type siblings at birth. Around 5 d after birth (postnatal day [P]5), however, *ColQ*^{-/-} mice began to exhibit a tremor when moving. The tremor persisted throughout life. The homozygotes remained active, responsive, and capable of feeding, but failed to thrive, and grew at a slower rate than littermates (Fig. 1 d). About half of the *ColQ*^{-/-} mice died at about the time of weaning (P21) and around two-thirds of the survivors died over the next few weeks. 10–20% of *ColQ*^{-/-} mice lived into adulthood (>3 mo) but remained much smaller than littermates.

ColQ Mutants Lack Synaptic AChE

Sections of skeletal muscle from *ColQ*^{-/-} mutants and littermates were doubly stained with an antiserum to recombinant *ColQ* plus rhodamine- α -bungarotoxin, which binds to AChRs and thereby marks synaptic sites. In controls, *ColQ* was concentrated at synaptic sites and was undetectable extrasynaptically (Fig. 2, a and a'). In *ColQ*^{-/-} mutants, AChR-rich synaptic sites were nearly normal in size, shape, and distribution (see below) but, as expected, bore no *ColQ* (Fig. 2, b and b').

The *ColQ* subunit is believed to anchor AChE to the basal lamina at the neuromuscular junction. To obtain definitive evidence on this point, we stained sections of mutant and control muscle with antibodies specific for the AChE catalytic subunit. This antibody recognizes both of the known alternatively spliced products (T and H) of the mammalian AChE gene (Duval et al., 1992). AChE was abundant at all synaptic sites in controls, but undetectable in homozygotes (Fig. 2, c and d).

This result suggested that *ColQ* is required for accumulation of all synaptic AChE. An alternative explanation,

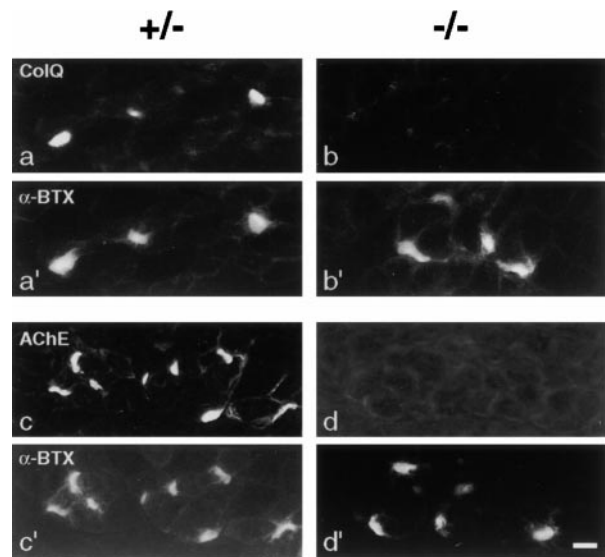


Figure 2. *ColQ*^{-/-} endplates lack AChE. Sections of skeletal muscle from *ColQ*^{+/-} and *ColQ*^{-/-} littermates were double-labeled with rhodamine- α -bungarotoxin plus antibodies to either the catalytic (AChE_T) or collagenous (*ColQ*) subunit of AChE. Homozygous mutant endplates lacked not only *ColQ* but also all detectable AChE_T . Bar, 10 μm .

however, was that the association of AChE with synaptic membranes or matrix had merely been weakened in the absence of its collagenous tail, in which case AChE might have been present at synapses *in vivo* but lost during preparation of sections. Therefore, we performed two additional tests to seek AChE at synaptic sites in *ColQ*^{-/-} muscle *in situ*. First, we injected fasciculin-2, a selective inhibitor of AChE (Rodríguez-Ithurralde et al., 1983) into *ColQ*^{-/-} mice and their littermates. This inhibitor was chosen because it penetrates the central nervous system poorly, and is therefore believed to exert its effects predominantly on peripheral AChE. Fasciculin-2 (3–6 $\mu\text{g/g}$, injected intraperitoneally) caused tremor followed by flaccid paralysis in controls. In mutants, in contrast, effects of fasciculin were minor, and injected animals were reflexive and capable of righting. Second, we recorded mepps from muscle fibers of *ColQ*^{-/-} mice and littermate controls (Fig. 3). The decay times of mepps were variable but on average slower in homozygotes than in controls (data not shown), presumably because AChE terminates neurotransmitter action at normal neuromuscular junctions (Whathey et al., 1979), whereas diffusion does so in *ColQ*^{-/-} muscle. More importantly, addition of fasciculin greatly slowed the decay of mepps in normal muscle, but had no significant effect on the time course of mepps in *ColQ*^{-/-} muscle (from 3.57 ± 0.18 to 3.47 ± 0.07 ms in four experiments; $P > 0.2$). Together, these toxicological and physiological tests support the idea that *ColQ*^{-/-} mutants lack functional synaptic AChE.

ColQ Is Required for Assembly of All Asymmetric and Some Globular AChE in Muscle

We used sucrose density gradient centrifugation to assess

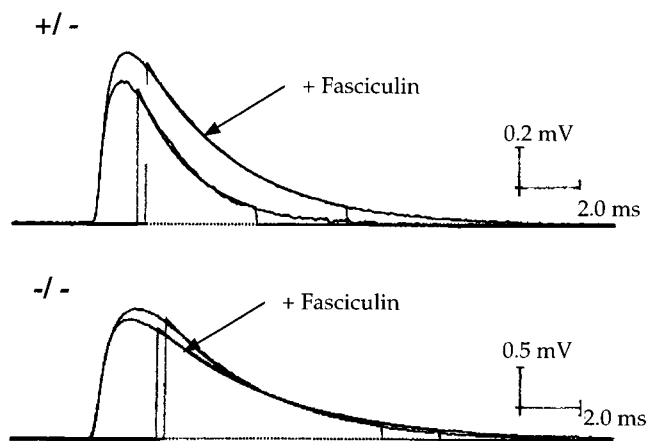


Figure 3. Mepps recorded in muscle fibers from 40-d-old *ColQ*^{+/+} (top) and *ColQ*^{-/-} (bottom) mice. Addition of the AChE inhibitor fasciculon-2 (320 nM) to the bath increased the amplitude and prolonged the decay time constant of mepps in control muscle but had no significant effect on the size or shape of mepps in *ColQ*^{-/-} muscle. Each trace represents the average of 50 mepps. The decay phases of averaged mepps were fitted by a single exponential from 10% to 90% of the maximal amplitude (vertical lines). The difference in mepp amplitudes between *ColQ*^{+/+} and *ColQ*^{-/-} muscles is due to differences in muscle fiber diameter and input resistance.

the molecular forms of AChE present in *ColQ*^{-/-} muscles. Globular forms are extracted into detergent-containing buffers at low ionic strength, whereas asymmetric (collagen-tailed forms) are extracted only at high ionic strength (Bon et al., 1978). Therefore, we first homogenized muscles with detergent-containing LS buffers, then reincubated the pellet with HS buffers to selectively solubilize asymmetric forms.

Control (*ColQ*^{+/+} and *ColQ*^{+/-}) muscles contain three asymmetric forms, corresponding to a single helical trimer of ColQ chains attached to one, two, or three tetramers of catalytic subunits (A₄, A₈, and A₁₂, respectively; Massoulié and Bon, 1982). In contrast, no asymmetric forms were detectable in *ColQ*^{-/-} muscle (Fig. 4, b and c). Because some asymmetric AChE is difficult to solubilize from tissue (Rossi and Rotundo, 1993), we also assayed the pellet remaining after HS and detergent extraction. AChE activity in insoluble fractions was 14% of that in the HS extract for *ColQ*^{+/+} muscles (*n* = 4), and 30% of that in the HS extract for *ColQ*^{+/-} muscles. However, AChE activity was undetectable in the insoluble fraction from *ColQ*^{-/-} muscles. Similar results were obtained with muscles from neonates (P0) and at P20. Thus, all asymmetric AChE in muscle requires ColQ for its assembly and/or accumulation.

Surprisingly, loss of AChE in *ColQ*^{-/-} mice was not limited to the asymmetric forms. At birth, three major peaks of AChE activity were distinguishable in detergent extracts of control muscle, corresponding to amphiphilic monomers and dimers (G₁^a and G₂^a) and nonamphiphilic tetramers (G₄^{na}; Massoulié et al., 1998). G₁^a and G₂^a were retained in neonatal *ColQ*^{-/-} muscles, but the G₄^{na} peak was almost entirely absent (Fig. 4 a). In addition, the pool of globular tetramers extracted by HS was absent from

ColQ^{-/-} neonates (Fig. 4 b). At P20, however, amphiphilic and nonamphiphilic tetramers (G₄^a and G₄^{na}) as well as G₁^a and G₂^a forms were present in *ColQ*^{-/-} muscles (data not shown). Thus, ColQ-independent mechanisms for assembly or retention of G₄ do exist (see Discussion).

ColQ Is Required for Assembly of Asymmetric BuChE

BuChE is homologous to AChE, hydrolyzes acetylcholine, and is present at the neuromuscular junction (Chatonnet and Lockridge, 1989; Chapron et al., 1997). Like AChE, BuChE catalytic monomers assemble into both globular and asymmetric multimers, and the asymmetric multimers bear a collagenase-sensitive subunit (Vigny et al., 1978; Toutant et al., 1985). To determine whether ColQ serves as the collagen tail for BuChE, we assayed sucrose density gradients in the presence of a selective inhibitor of AChE, BW284c51. Asymmetric and globular forms of BuChE were detectable in control muscle (Fig. 4, d and e). As reported previously, S values of BuChE differed from those of AChE (Vigny et al., 1978; Krejci et al., 1997), providing assurance that the activity seen in the presence of BW284c51 did not reflect incomplete inhibition of AChE. Moreover, activity was inhibited by the selective inhibitor of BuChE, iso-OMPA (data not shown). Globular isoforms of BuChE were retained in *ColQ*^{-/-} mutants, but no asymmetric BuChE was detectable (Fig. 4, d and e). Thus, the *ColQ* gene appears to encode the collagenous tails of both AChE and BuChE.

Lacking antibodies to BuChE, we used the histochemical stain of Karnovsky and Roots (1964) to localize BuChE in control and mutant muscles. This method relies on hydrolysis of the acetylcholine analogue, acetylthiocholine, which is cleaved by both AChE and BuChE. At P20, reaction product was readily detectable at *ColQ*^{-/-} synaptic sites, although levels were substantially reduced compared with controls (Fig. 5, a and b). The AChE inhibitor BW284c51 had no effect on the staining of *ColQ*^{-/-} synaptic sites, but decreased staining in controls to approximately the level seen in mutants (Fig. 5, c and d). This result provides independent evidence that AChE is depleted from *ColQ*^{-/-} neuromuscular junctions. In contrast, the BuChE inhibitor iso-OMPA decreased staining of control synaptic sites only slightly, but completely abolished staining of *ColQ*^{-/-} synaptic sites (Fig. 5, e and f). Thus, the synaptic acetylcholine-hydrolyzing activity in mutants is largely or entirely BuChE. Reaction product was undetectable in controls even after prolonged incubation when a mixture of BW284c51 plus iso-OMPA was added with the substrate, indicating that AChE and BuChE together account for most or all of the ACh-hydrolyzing activity at control synapses (Fig. 5, g and h).

To obtain information on the molecular forms and cellular localization of synaptic BuChE, we treated cross-sections in various ways then stained them in the presence of BW284c51. In both control and *ColQ*^{-/-} muscle, reaction product was tightly associated with synaptic sites (Fig. 5, i and j). Pretreatment of sections with either collagenase, which releases matrix-associated enzyme, or with the detergent Triton X-100, which releases membrane bound or intracellular enzyme, reduced staining of synaptic sites in control muscles (Fig. 5, k and m). Combined treatment

with collagenase and Triton X-100 removed all detectable BuChE (Fig. 5, o and p). Thus, both matrix- and membrane-associated BuChE are present at control synapses. In *ColQ*^{-/-} muscle, collagenase treatment had no effect on the level of BuChE (Fig. 5 l) but detergent treatment abolished all staining (Fig. 5 n), confirming the absence of matrix-associated BuChE and showing that residual activity is membrane-associated. Denervation, which causes

loss of nerve terminals and rapid remodeling of terminal Schwann cells, led to complete loss of this membrane-associated BuChE from *ColQ*^{-/-} synapses but had little effect on controls (Fig. 5, q and r). Together, these results suggest that both membrane- and matrix-associated forms of BuChE are normally concentrated at the neuromuscular junction. The BuChE of the synaptic cleft is predominantly matrix-associated, asymmetric, and requires ColQ

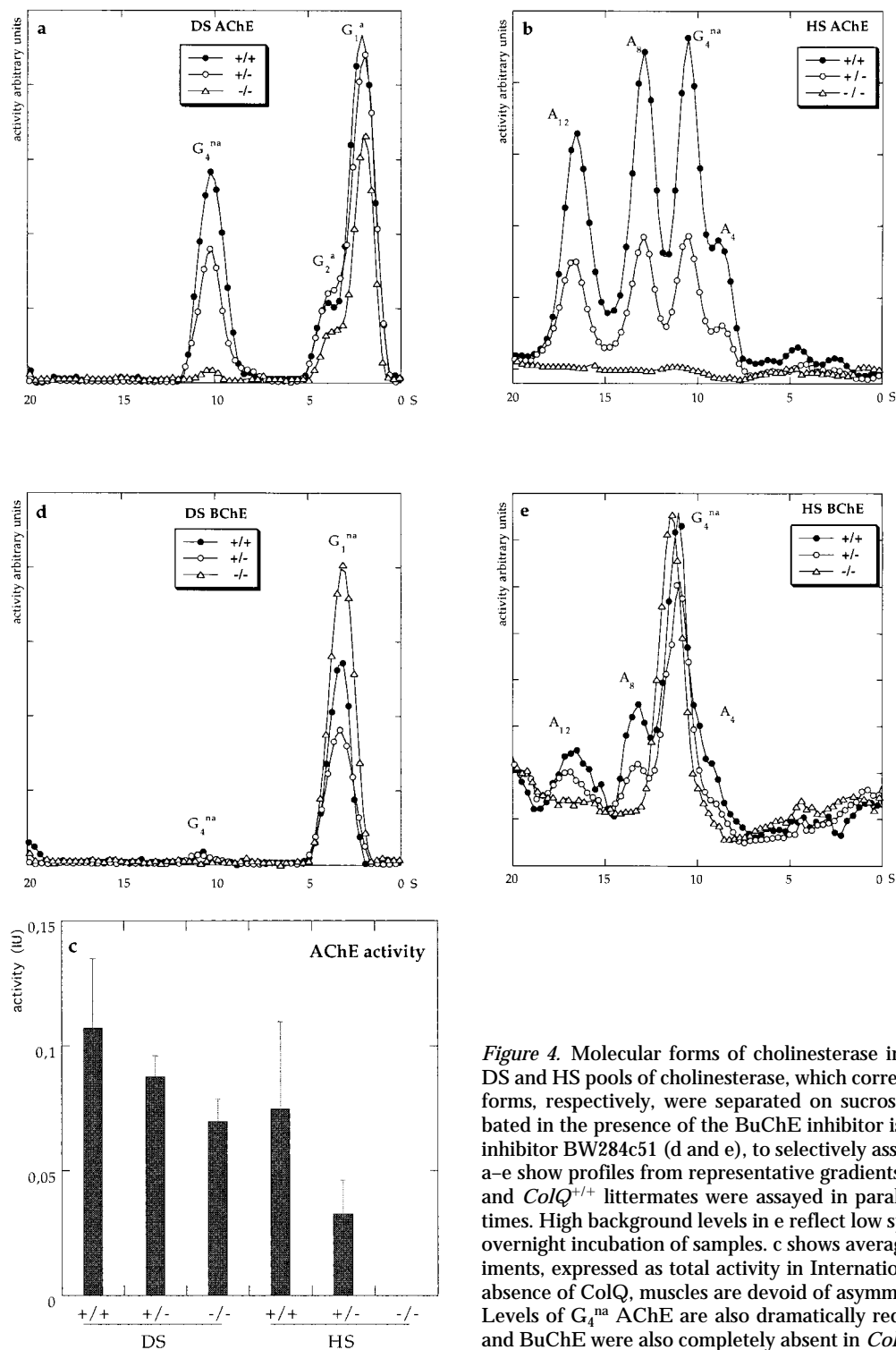


Figure 4. Molecular forms of cholinesterase in neonatal *ColQ* mutant muscles. DS and HS pools of cholinesterase, which correspond to globular and asymmetric forms, respectively, were separated on sucrose gradients. Fractions were incubated in the presence of the BuChE inhibitor iso-OMPA (a and b) or the AChE inhibitor BW284c51 (d and e), to selectively assay AChE or BuChE, respectively. a-e show profiles from representative gradients. In each case, *ColQ*^{-/-}, *ColQ*^{+/-}, and *ColQ*^{+/+} littermates were assayed in parallel, and with identical incubation times. High background levels in e reflect low specific activity, which necessitated overnight incubation of samples. c shows average AChE activities from all experiments, expressed as total activity in International Units (IU) per muscle. In the absence of ColQ, muscles are devoid of asymmetric forms of AChE and BuChE. Levels of G₄^{na} AChE are also dramatically reduced. At P20, asymmetric AChE and BuChE were also completely absent in *ColQ*^{-/-}, but G₄ AChE was present.

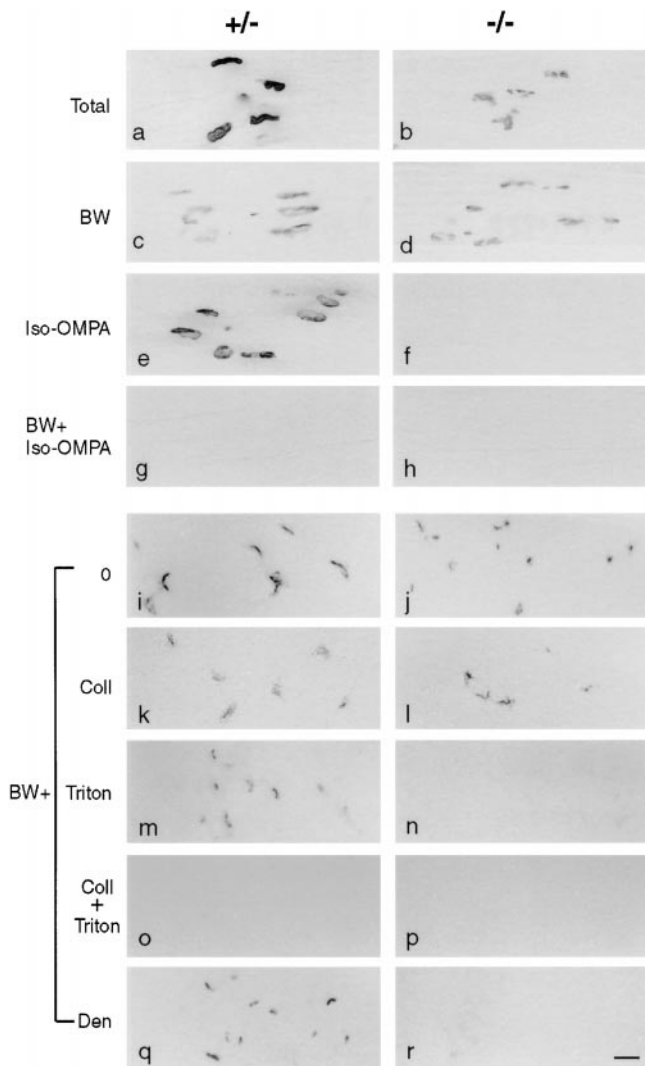


Figure 5. Sections of muscle from P20 *ColQ*^{-/-} and *ColQ*^{+/-} littermates stained for cholinesterase activity by the Karnovsky method. a–h are longitudinal sections; i–r are cross-sections. (a and b) Levels of cholinesterase activity are much higher at control than *ColQ*^{-/-} endplates. (c, d, i, and j) BW284c51 (BW), a selective inhibitor of AChE, has no effect on synaptic cholinesterase activity in *ColQ*^{-/-} muscle, but decreases activity in controls to a level equivalent to that in the mutant. (e and f) Iso-OMPA, a selective inhibitor of BuChE, has only a slight effect on cholinesterase activity in controls but abolishes all activity in mutants. (g and h) No activity is detectable in either muscle in the presence of both BW284c51 and iso-OMPA. These results indicate that both AChE and BuChE are present at control endplates, but only BuChE at *ColQ*^{-/-} endplates. (k and l) Incubation of sections with collagenase to release asymmetric enzyme before staining for BuChE (BW+) reduces activity in controls but has no effect at *ColQ*^{-/-} synapses. (m and n) After incubation with Triton X-100 to release membrane-bound enzyme, some BuChE activity persists at control synapses but is abolished at *ColQ*^{-/-} synapses. (o and p) No BuChE activity is detectable in controls or mutants after sequential treatment with Triton and collagenase. (q and r) 3 d after nerve section, when nerve terminals have degenerated, BuChE persists at control synaptic sites but is lost from mutant synaptic sites. Bar, 20 μ m.

for assembly or localization. Membrane-associated BuChE that persists in the absence of ColQ, in contrast, is likely to be associated with nerve terminals or terminal Schwann cells, although we cannot exclude the possibility that it is postsynaptic.

Although the synapse-associated BuChE in *ColQ*^{-/-} muscles did not appear to be localized to the synaptic cleft, it might have been near enough to hydrolyze released acetylcholine. We tested this possibility by determining whether iso-OMPA affected the decay of mepps recorded from *ColQ*^{-/-} neuromuscular junctions. No significant effect was seen ($\tau = 2.70 \pm 0.15$ ms in normal saline and 2.98 ± 0.49 ms in the presence of 10 μ M iso-OMPA; $n = 4$; $P > 0.2$). Therefore, although there is synapse-associated BuChE in *ColQ*^{-/-} mice, it does not appear to provide a mechanism to compensate for loss of AChE.

Synaptic Structure Is Abnormal in *ColQ* Mutants

To assess the size and shape of neuromuscular junctions in *ColQ*^{-/-} muscle, thick longitudinal sections were stained with rhodamine- α -bungarotoxin. In controls, the AChR-rich membrane is a roughly circular plaque at birth, then passes through a perforated-plaque stage (Steinbach, 1981) and eventually matures into a pretzel-like array of distinct AChR-rich branches by P20 (Fig. 6 a). The precise geometry of branches is unique at each synaptic site, but the general pattern is stereotyped. In mutant homozygotes, in contrast, synaptic geometry was variable. Some synaptic sites were smaller than controls but roughly normal in appearance (Fig. 6 b), some retained the immature appearance characteristic of \sim 1-wk-old controls (Fig. 6 c), and some appeared fragmented (Fig. 6 d). Approximately 40% of the neuromuscular junctions were normal in geometry, another 40% were fragmented, and the remaining 20% were immature.

Electron microscopy revealed two structural abnormalities at synaptic sites in *ColQ*^{-/-} muscles. First, the cytoplasm beneath the postsynaptic membrane was often riddled with holes, consistent with a localized degenerative response (Fig. 7 b). Such local degeneration has been observed after acute inhibition of AChE (Laskowski et al., 1977), and is believed to result from entry of Ca^{2+} through excessively activated AChRs (Leonard and Salpeter, 1979). Consistent with this interpretation, signs of necrosis were seldom observed in nonsynaptic regions of *ColQ*^{-/-} muscle, and no signs of muscle fiber degeneration and regeneration (such as central nuclei, which are diagnostic of immature or regenerated fibers) were detectable. Second, nerve terminals were sometimes partially enwrapped by processes of Schwann cells (Fig. 7 d). Such enwrapment has been seen in several pathological situations, and can occur after muscle damage, or as a direct consequence of abnormalities in the synaptic cleft (Duchen et al., 1974; Jirmanová, 1975; Noakes et al., 1995; Patton et al., 1998). Because Schwann cell processes are impermeable to neurotransmitter, their intrusion into the synaptic cleft might represent one adaptive mechanism by which *ColQ*^{-/-} synapses limit activation of AChRs.

Interestingly, the incidence of subsynaptic necrosis and Schwann cell enwrapment of nerve terminals varied as a function of age. At P20, nearly two-thirds of synaptic sites

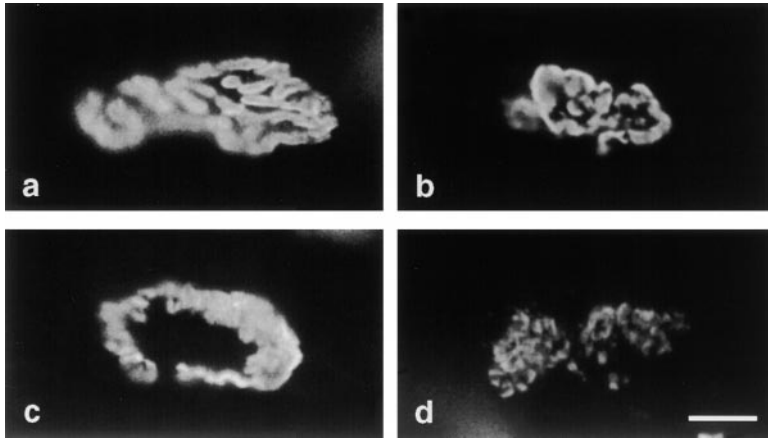


Figure 6. Geometry of synapses in *ColQ*^{-/-} mice. Longitudinal sections of P20 control (a) and *ColQ*^{-/-} muscle were stained with rhodamine- α -bungarotoxin. In controls, the postsynaptic membrane contains a set of interconnected AChR-rich gutters. In mutants, some synaptic sites are relatively normal in appearance (b), other appears immature (c), and still others appear fragmented (d). Bar, 10 μ m.

encountered (80/125) showed clear signs of necrosis. By 6 mo of age, however, <5% of synaptic profiles (2/71) showed necrosis, and many were indistinguishable from controls (compare Fig. 7, a and c). This difference raises the possibility that damage occurring early is repaired and that compensatory mechanisms, such as Schwann cell enwrapment, prevent damage from recurring. Indeed, the incidence of nerve terminals partially or completely enwrapped by Schwann cell processes increased somewhat, from one-third (42/125) at P20 to over one-half (39/71) at 6 mo of age. This difference suggests either that Schwann cell enwrapment is progressive, or that individuals with

more complete enwrapment are more likely to survive. Necrosis and Schwann cell wrapping were seen in only 1 and 4 of 83 control endplates, respectively.

Finally, we stained sections of muscle from *ColQ*^{-/-} mice and littermate controls with a panel of antibodies to proteins present at synaptic sites. These included the transmembrane proteins α -sarcoglycan and β -dystroglycan, which are present throughout the muscle fiber but concentrated in the postsynaptic membrane; rapsyn and utrophin, which are selectively associated with the subsynaptic cytoplasm; and agrin, which is concentrated in synaptic basal lamina (Sanes and Lichtman, 1999). The distribu-

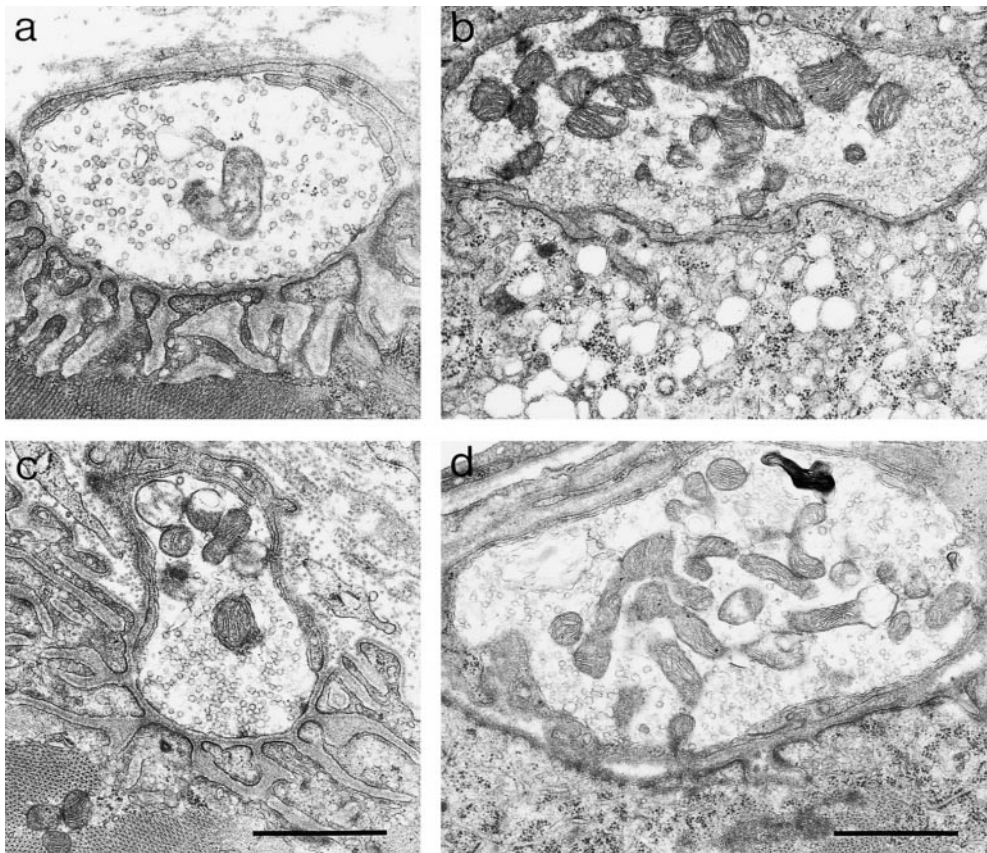


Figure 7. Ultrastructure of synapses in *ColQ*^{-/-} mice. Electron micrographs from P20 control (a), P20 *ColQ*^{-/-} (b), and P180 *ColQ*^{-/-} (c and d) muscles. In controls, nerve terminals lie atop a folded postsynaptic membrane and are capped by processes of Schwann cells. In *ColQ*^{-/-} mutants, the subsynaptic cytoplasm appears necrotic at some synapses (b), and some nerve terminals are enwrapped by Schwann cells (d). Even at 6 mo of age, however, some mutant synapses appear normal (c). Bar, 1 μ m.

tion of all of these markers was qualitatively similar in control and homozygous mutant mice (Fig. 8, a–j).

We also stained sections with the lectin VVA-B4. VVA-B4 binds to glycoconjugates that terminate with a β -*N*-acetylglucosaminyl residue and selectively stains the synaptic cleft at the neuromuscular junction (Scott et al., 1988). We showed previously that VVA-B4 binds to asymmetric but not globular forms of AChE in muscle, but presented indirect evidence that other VVA-B4-binding proteins were also present in the synaptic cleft (Scott et al., 1988; Martin and Sanes, 1995). VVA-B4 stained synaptic sites nearly as intensely in *ColQ*^{-/-} muscle as in control muscle (Fig. 8, k and l), providing direct evidence for the existence of additional synaptic VVA-B4-binding moieties.

ColQ Is Required for Assembly of All Asymmetric AChE

Asymmetric forms of AChE are most abundant in skeletal muscle, but are also present in several other tissues (Tou-

tant and Massoulié, 1988). To determine whether asymmetric AChE in nonmuscle tissues requires *ColQ* for assembly, we analyzed HS extracts of brain and heart. Low levels of asymmetric AChE were detectable in both tissues from control mice but in neither tissue from *ColQ*^{-/-} mice (Fig. 9).

We also made a preliminary survey of tissue structure in the major organs of *ColQ*^{-/-} mice, but found no abnormalities.

Discussion

Previous biochemical studies have shown that the *ColQ* protein is a collagenous subunit of asymmetric AChE, and suggested that it is critical for accumulation of AChE in the synaptic cleft of the neuromuscular junction. Analysis of *ColQ*^{-/-} mutant mice has now allowed us to ascertain, in situ, the roles that *ColQ* plays in the assembly and anchoring of AChE and in the development and function of

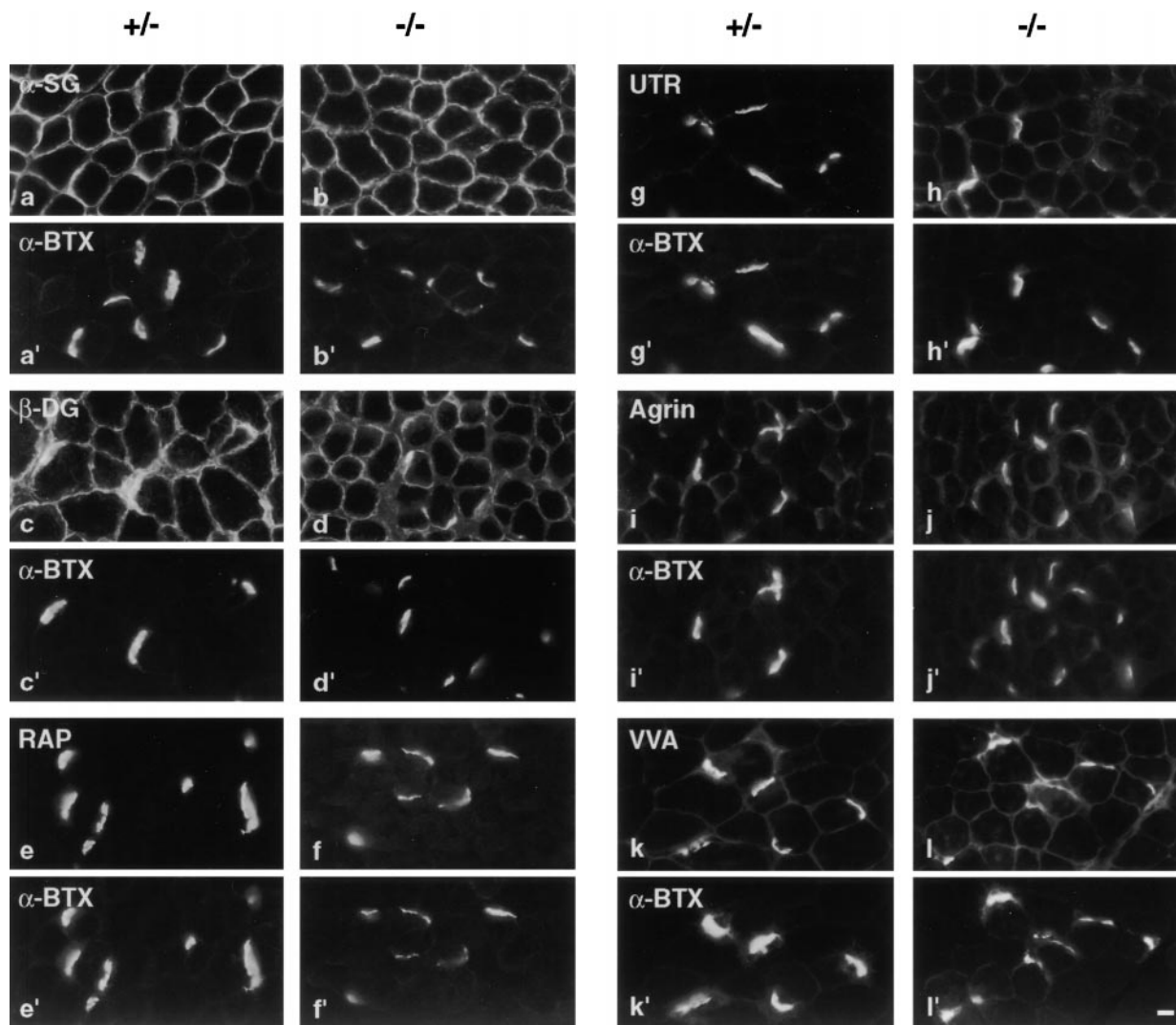


Figure 8. Molecular architecture of synapses in *ColQ*^{-/-} mice. Sections from *ColQ*^{-/-} and control muscle were doubly stained with rhodamine- α -bungarotoxin (a'–l') plus antibodies to α -sarcoglycan (a and b), β -dystroglycan (c and d), rapsyn (e and f), utrophin (g and h), or agrin (i and j), or with the lectin VVA-B4 (k and l). No qualitative differences were apparent between mutant and control synapses. Bar, 10 μ m.

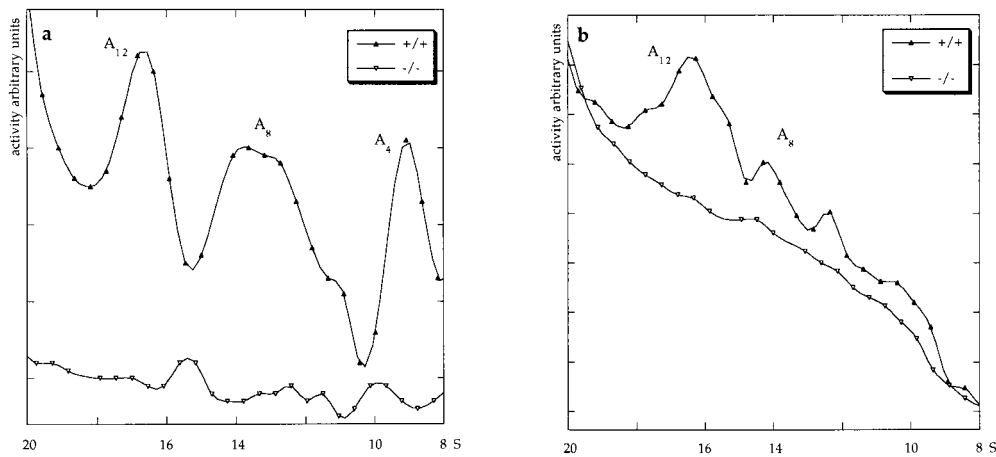


Figure 9. ColQ is required for assembly of asymmetric forms of AChE in heart and brain. HS extracts of heart (a) or brain (b) of 2-mo-old mice were fractionated on sucrose gradients and assayed for AChE. Only portions of the gradient corresponding to 8–20S material are shown. No asymmetric AChE was detected in *ColQ*^{-/-} tissue.

the neuromuscular junction. Specifically, we have been able to answer the seven questions posed in the Introduction.

First, no asymmetric AChE is present in muscles that lack ColQ, presumably because the ColQ protein forms the collagen tail that endows asymmetric forms with their distinguishing feature. This result was expected but not inevitable. For example, ColQ might have been only one of multiple collagenous subunits, a possibility suggested by immunological studies showing a structural change in the collagen tail during posthatching development in birds (Tsim et al., 1988b). Alternatively, a synaptic collagen that normally plays other roles (Miner and Sanes, 1994, 1996) might have been capable of compensating for lack of ColQ in mutants.

Second, muscles from newborn *ColQ*^{-/-} mice lack not only all asymmetric AChE, but also the nonamphiphilic tetrameric form of AChE, G_4^{na} . This observation was unexpected because the G_4^{na} molecules have been assumed to be homotetramers of AChE_T catalytic subunits. Possible explanations for this result include the following. G_4^{na} molecules may be derived from collagen-tailed molecules by proteolysis of the collagen tail, either in vivo or after extraction. Assembly of the tetramer might require transient association of AChE_T with ColQ. Assembly might require an alternatively spliced product of the *ColQ* gene that contains the amino-terminal PRAD domain, but not the collagenous domain. Such alternatively spliced products do in fact occur (Krejci et al., 1997), but have not yet been characterized. Some of the G_4^{na} may comprise tetramers associated with a single full-length collagen chain rather than a triple helix; such molecules sediment around 10S (Krejci, E., unpublished results). In any event, muscles of *ColQ*^{-/-} mice did contain both amphiphilic and nonamphiphilic tetramers (G_4^a and G_4^{na}) at P20. These tetramers might have been assembled without any organizer or might contain an alternate organizing subunit such as the still incompletely characterized P subunit (Massoulié et al., 1993). Thus, although the PRAD of ColQ can induce tetramerization of AChE_T (Bon et al., 1997; Simon et al., 1998), and may do so in vivo at P0, there are clearly additional PRAD-independent mechanisms for forming tetramers.

Third, no detectable AChE is present at synaptic sites in *ColQ*^{-/-} muscles. Histochemical, immunochemical, toxicological, and electrophysiological assays all gave similar results in this regard. The lack of synaptic AChE could reflect loss of collagen-tailed AChE and/or loss of G_4 forms. We favor the interpretation that all synaptic AChE is collagen-tailed because all of the histochemically detectable AChE can be removed by collagenase treatment of sections (data not shown) or tissue (Hall and Kelly, 1971). In addition, all globular forms (G_1^a , G_2^a , G_4^a , and G_4^{na}) are present in *ColQ*^{-/-} mice at P20, yet synaptic AChE is absent at all ages tested. Globular AChE is associated with isolated basal lamina from frog muscles (Anglister et al., 1994), but this may result from the alterations produced in the experimental system of muscle and nerve degeneration.

Fourth, ColQ is required for assembly or accumulation of asymmetric BuChE as well as AChE. In birds, collagen-tailed molecules containing both AChE and BChE subunits have been detected in muscles of hatchlings (Tsim et al., 1988a), suggesting that both enzymes use a common tail. Likewise, Krejci et al. (1997) showed that antibodies to ColQ interact with both AChE and BuChE as assessed by sucrose density centrifugations. Taken together with these biochemical data, our genetic results strongly support the conclusion that the *ColQ* gene produces the collagen tails for both AChE and BuChE.

Fifth, the function of the neuromuscular junction is impaired in the absence of ColQ. However, the defects are not as severe as might be expected, considering the dramatic effects of acutely administering extremely selective blockers of peripheral AChE such as fasciculin. In particular, movements of *ColQ*^{-/-} mice are relatively normal, while fasciculin-treated normal mice are paralyzed. Moreover, the postsynaptic necrosis observed in *ColQ*^{-/-} weanlings, a likely result of excessive calcium influx through AChRs (Leonard and Salpeter, 1979), is largely absent from those mutants that survive to later ages. These observations suggest that neuromuscular junctions compensate for the absence of AChE. Compensation does not appear to involve persistence or upregulation of BuChE: asymmetric BuChE is lost in the mutant and the BuChE inhibitor, iso-OMPA, does not affect the time course of mepps.

Instead, ultrastructural studies suggest a simple structural mechanism to limit the amount of neurotransmitter that reaches the postsynaptic membrane: invasion of the synaptic cleft by Schwann cell processes at *ColQ*^{-/-} synapses. Enwrapment of nerve terminals by Schwann cell processes is, in fact, actively regulated by another component of synaptic basal lamina, laminin-11 (Patton et al., 1998). ColQ might exert a similar effect. In addition, compensatory changes in quantal size and quantal content may occur; such homeostatic changes have been documented in response to several chemical or genetic perturbations of the efficacy of neuromuscular transmission in both vertebrates and invertebrates (reviewed in Landmesser, 1998). Currently, we are using electrophysiological methods to seek such alterations in *ColQ*^{-/-} mice, with the aim of learning how the synapse combines structural and physiological compensations to adapt to the challenge posed by AChE deficiency.

Sixth, initial formation of the neuromuscular junction proceeds in the absence of ColQ and AChE. AChE promotes the extension of neurites from cultured motoneurons by a noncatalytic mechanism (Sternfeld et al., 1998; see also Small et al., 1995), and overexpression of AChE in transgenic frogs and mice perturbs formation of neuromuscular junctions in vivo (Seidman et al., 1994; Andres et al., 1997; Sternfeld et al., 1998). Our results imply that the developmental roles of ColQ and AChE at the synapse are either subtle or masked by compensatory mechanisms. However, it remains possible that expression of AChE at other sites is crucial for synaptogenesis. Moreover, at later stages, there are clear defects in the maturation of *ColQ*^{-/-} neuromuscular junctions: some remain immature in geometry and others appear fragmented. These abnormalities could reflect a direct requirement for AChE or ColQ in synaptic maturation or maintenance, but might also be secondary consequences of subsynaptic necrosis or alterations in activity levels. Further experiments will be required to distinguish these alternatives.

Seventh, ColQ is required for assembly or accumulation of asymmetric AChE in all tissues tested, but tissues other than skeletal muscle are not obviously defective in structure or function. However, it is premature to conclude that ColQ plays no roles in these tissues. For example, asymmetric AChE is concentrated in synaptic layers of the retina (Reiss et al., 1996); analyses of these synapses have not yet been undertaken. In addition, it is tempting to speculate that in AChE-poor tissues, ColQ or other PRAD-containing products of the *ColQ* gene serve to anchor proteins other than AChE to membranes or matrix. Identification of such proteins will guide the search for subtle phenotypes in *ColQ*^{-/-} mice.

Finally, it is interesting to note the parallels between *ColQ*^{-/-} mice and humans with AChE-deficiency syndrome (CMS-Ic). This syndrome was described by Engel et al. (1977) over 20 years ago, and was reported just this year to result from defects in the human COLQ gene (Donger et al., 1998; Ohno et al., 1998). Some patients appear to be protein nulls, while others have mutations in the carboxy terminus of ColQ that permit formation of asymmetric AChE but prevent its stable association with the basal lamina of the synaptic cleft. All of the COLQ patients are severely myasthenic, as are the *ColQ*^{-/-} mice,

making the mice a valid model for assessing pathogenic mechanisms and therapeutic interventions.

We thank Mia Nichol, Carol Borgmeyer, Jimmy Gross, and Sherry Weng for assistance.

This work was supported by grants from the National Institutes of Health and Centre National de la Recherche Scientifique, the Direction des Recherches et Etudes Techniques, the Association Française contre les Myopathies, and Human Frontier Science Program Organization. G. Feng was a fellow of the Jane Coffin Childs Memorial Fund for Medical Research.

Received for publication 12 January 1999 and in revised form 18 February 1999.

References

- Andres, C., R. Beeri, A. Friedman, E. Lev-Lehman, S. Henis, R. Timberg, M. Shani, and H. Soreq. 1997. Acetylcholinesterase-transgenic mice display embryonic modulations in spinal cord choline acetyltransferase and neurexin I beta gene expression followed by late-onset neuromotor deterioration. *Proc. Natl. Acad. Sci. USA*. 94:8173-8178.
- Anglister, L., B. Haesaert, and U.J. McMahan. 1994. Globular and asymmetric acetylcholinesterase in the synaptic basal lamina of skeletal muscle. *J. Cell Biol.* 125:183-196.
- Austin, L., and W.K. Berry. 1953. Two selective inhibitors of cholinesterase. *Biochem. J.* 54:695-700.
- Bon, S., and J. Massoulié. 1997. Quaternary association of acetylcholinesterase. I. Oligomeric associations of T subunits with and without the amino-terminal domain of the collagen tail. *J. Biol. Chem.* 272:3007-3015.
- Bon, S., F. Coussen, and J. Massoulié. 1997. Quaternary associations of acetylcholinesterase. II. The polyproline attachment domain of the collagen tail. *J. Biol. Chem.* 272:3016-3021.
- Brandan, E., M. Maldonado, J. Garrido, and N.C. Inestrosa. 1985. Anchorage of collagen-tailed acetylcholinesterase to the extracellular matrix is mediated by heparan sulfate proteoglycans. *J. Cell Biol.* 101:985-992.
- Carson, S., S. Bon, M. Vigny, J. Massoulié, and M. Fardeau. 1979. Distribution of acetylcholinesterase molecular forms in neural and non-neural sections of human muscle. *FEBS Lett.* 97:348-352.
- Chapron, J., S. De La Porte, L. Delepine, and J. Koenig. 1997. Schwann cells modify expression of acetylcholinesterase and butyrylcholinesterase at rat neuromuscular junctions. *Eur. J. Neurosci.* 9:260-270.
- Chatonnet, A., and O. Lockridge. 1989. Comparison of butyrylcholinesterase and acetylcholinesterase. *Biochem. J.* 260:625-634.
- Deprez, P.N., and N.C. Inestrosa. 1995. Two heparin-binding domains are present on the collagenic tail of asymmetric acetylcholinesterase. *J. Biol. Chem.* 270:11043-11046.
- Donger, C., E. Krejci, A.P. Serradell, B. Eymard, S. Bon, S. Nicole, D. Chateau, F. Gary, M. Fardeau, J. Massoulié, and P. Guicheney. 1998. Mutation in the human acetylcholinesterase-associated collagen gene, COLQ, is responsible for congenital myasthenic syndrome with endplate acetylcholinesterase deficiency (type Ic). *Am. J. Hum. Genet.* 63:967-975.
- Duchen, L.W., B.J. Excell, R. Patel, and B. Smith. 1974. Changes in motor endplates resulting from muscle fibre necrosis and regeneration. A light and electron microscopic study of the effects of the depolarizing fraction (cardiotoxin) of *Dendroaspis jamesoni* venom. *J. Neurol. Sci.* 21:391-417.
- Duval, N., J. Massoulié, and S. Bon. 1992. H and T subunits of acetylcholinesterase from *Torpedo*, expressed in COS cells, generate all types of globular forms. *J. Cell Biol.* 118:641-653.
- Ellman, G.L., K.D. Courtney, V. Andres, Jr., and R.M. Featherstone. 1961. A new and rapid colorimetric determination of acetylcholinesterase activity. *Biochem. Pharmacol.* 7:88-95.
- Engel, A.G. 1994a. Acquired autoimmune myasthenia gravis. In *Myology*. A.G. Engel and C. Franzini-Armstrong, editors. McGraw Hill, New York. 1769-1798.
- Engel, A.G. 1994b. Myasthenic syndromes. In *Myology*. A.G. Engel and C. Franzini-Armstrong, editors. McGraw Hill, New York. 1798-1835.
- Engel, A.G., E.H. Lambert, and M.R. Gomez. 1977. A new myasthenic syndrome with endplate acetylcholinesterase deficiency, small nerve terminals, and reduced acetylcholine release. *Ann. Neurol.* 1:315-330.
- Hall, Z.W. 1973. Multiple forms of acetylcholinesterase and their distribution in endplate and non-endplate regions of rat diaphragm muscle. *J. Neurobiol.* 4:343-361.
- Hall, Z.W., and R.B. Kelly. 1971. Enzymatic detachment of endplate acetylcholinesterase from muscle. *Nat. New Biol.* 232:62-63.
- Jirmanová, I. 1975. Ultrastructure of motor endplates during pharmacologically-induced degeneration and subsequent regeneration of skeletal muscle. *J. Neurocytol.* 4:141-155.
- Karnovsky, M.J., and L. Roots. 1964. A "direct-coloring" thiocholine method for cholinesterases. *J. Histochem. Cytochem.* 12:219-221.
- Krejci, E., F. Coussen, N. Duval, J.M. Chatel, C. Legay, M. Puype, J. Vandekerckhove, J. Cartaud, S. Bon, and J. Massoulié. 1991. Primary structure of a

- collagenic tail peptide of *Torpedo* acetylcholinesterase: co-expression with catalytic subunit induces the production of collagen-tailed forms in transfected cells. *EMBO (Eur. Mol. Biol. Organ.) J.* 10:1285–1293.
- Krejci, E., S. Thomine, N. Boschetti, C. Legay, J. Sketelj, and J. Massoulié. 1997. The mammalian gene of acetylcholinesterase-associated collagen. *J. Biol. Chem.* 272:22840–22847.
- Landmesser, L.T. 1998. Synaptic plasticity: keeping synapses under control. *Curr. Biol.* 8:R564–R567.
- Laskowski, M.B., W.H. Olson, and W.D. Dettbarn. 1977. Initial ultrastructural abnormalities at the motor endplate produced by a cholinesterase inhibitor. *Exp. Neurol.* 57:13–33.
- Layer, P.G., and E. Willbold. 1995. Novel functions of cholinesterases in development, physiology and disease. *Prog. Histochem. Cytochem.* 29:1–94.
- Leonard, J.P., and M.M. Salpeter. 1979. Agonist-induced myopathy at the neuromuscular junction is mediated by calcium. *J. Cell Biol.* 82:811–819.
- Lwebuga-Mukasa, J.S., S. Lappi, and P. Taylor. 1976. Molecular forms of acetylcholinesterase from *Torpedo californica*: their relationship to synaptic membranes. *Biochemistry.* 15:1425–1434.
- Martin, P.T., and J.R. Sanes. 1995. Role for a synapse-specific carbohydrate in agrin-induced clustering of acetylcholine receptors. *Neuron.* 14:743–754.
- Massoulié, J., and S. Bon. 1982. The molecular forms of cholinesterase and acetylcholinesterase in vertebrates. *Ann. Rev. Neurosci.* 5:57–106.
- Massoulié, J., L. Pezzementi, S. Bon, E. Krejci, and F.M. Vallette. 1993. Molecular and cellular biology of cholinesterases. *Prog. Neurobiol.* 41:31–91.
- Massoulié, J., A. Anselmet, S. Bon, E. Krejci, C. Legay, N. Morel, and S. Simon. 1998. Acetylcholinesterase: C-terminal domains, molecular forms and functional localization. *J. Physiol.* 92:183–190.
- McMahan, U.J., J.R. Sanes, and L.M. Marshall. 1978. Cholinesterase is associated with the basal lamina at the neuromuscular junction. *Nature.* 271:172–174.
- Miner, J.H., and J.R. Sanes. 1994. Collagen IV $\alpha 3$, $\alpha 4$, and $\alpha 5$ chains in rodent basal laminae: sequence, distribution, association with laminins, and developmental switches. *J. Cell Biol.* 127:879–891.
- Miner, J.H., and J.R. Sanes. 1996. Molecular and functional defects in kidneys of mice lacking collagen $\alpha 3(IV)$: implications for Alport syndrome. *J. Cell Biol.* 135:1403–1413.
- Nagy, A., J. Rossant, R. Nagy, W. Abramow-Newerly, and J.C. Roder. 1993. Derivation of completely cell culture-derived mice from early-passage embryonic stem cells. *Proc. Natl. Acad. Sci. USA.* 90:8424–8428.
- Noakes, P.G., M. Gautam, J. Mudd, J.R. Sanes, and J.P. Merlie. 1995. Aberrant differentiation of neuromuscular junctions in mice lacking s-laminin/laminin $\beta 2$. *Nature.* 374:258–262.
- Ohno, K., J. Brengman, A. Tsujino, and A.G. Engel. 1998. Human endplate acetylcholinesterase deficiency caused by mutations in the collagen-like tail subunit (COLQ) of the asymmetric enzyme. *Proc. Natl. Acad. Sci. USA.* 95:9654–9659.
- Patton, B.L., A.Y. Chiu, and J.R. Sanes. 1998. Synaptic laminin prevents glial entry into the synaptic cleft. *Nature.* 393:698–701.
- Phillips, W.D., M.M. Maimone, and J.P. Merlie. 1991. Mutagenesis of the 43-kD postsynaptic protein defines domains involved in plasma membrane targeting and AChR clustering. *J. Cell Biol.* 115:1713–1723.
- Reiss, Y., S. Kroger, J. Grassi, K.W.K. Tsim, E. Willbold, and P.G. Layer. 1996. Extracellular and asymmetric forms of acetylcholinesterase are expressed on cholinergic and noncholinergic terminal neuropil of the developing chick retina. *Cell Tissue Res.* 286:13–22.
- Rodriguez-Ithurralde, D., R. Silveira, L. Barbeito, and F. Dajas. 1983. Fasciculin, a powerful anticholinesterase polypeptide from *Dendroaspis angusticeps* venom. *Neurochem. Int.* 5:267–274.
- Rosenberry, T.L., and J.M. Richardson. 1977. Structure of 18S and 14S acetylcholinesterase. Identification of collagen-like subunits that are linked by disulfide bonds to catalytic subunits. *Biochemistry.* 16:3550–3558.
- Rossi, S.G., and R.L. Rotundo. 1993. Localization of “non-extractable” acetylcholinesterase to the vertebrate neuromuscular junction. *J. Biol. Chem.* 268:19152–19159.
- Rossi, S.G., and R.L. Rotundo. 1996. Transient interactions between collagen-tailed acetylcholinesterase and sulfated proteoglycans prior to immobilization on the extracellular matrix. *J. Biol. Chem.* 271:1979–1987.
- Rotundo, R.L., S.G. Rossi, and L. Anglister. 1997. Transplantation of quail collagen-tailed acetylcholinesterase molecules onto the frog neuromuscular synapse. *J. Cell Biol.* 136:367–374.
- Sanes, J.R., and Z.W. Hall. 1979. Antibodies that bind specifically to synaptic sites on muscle fiber basal lamina. *J. Cell Biol.* 83:357–370.
- Sanes, J.R., and J.W. Lichtman. 1999. Development of the vertebrate neuromuscular junction. *Ann. Rev. Neurosci.* 22:389–442.
- Scott, L.J., F. Bacou, and J.R. Sanes. 1988. A synapse-specific carbohydrate at the neuromuscular junction: association with both acetylcholinesterase and a glycolipid. *J. Neurosci.* 8:932–944.
- Seidman, S., R.B. Aziz-Aloya, R. Timberg, Y. Loewenstein, B. Velan, A. Shaffer, J. Liao, B. Norgaard-Pedersen, U. Brodbeck, and H. Soreq. 1994. Overexpressed monomeric human acetylcholinesterase induces subtle ultrastructural modifications in developing neuromuscular junctions of *Xenopus laevis* embryos. *J. Neurochem.* 62:1670–1681.
- Simon, S., E. Krejci, and J. Massoulié. 1998. A four-to-one association between peptide motifs: four C-terminal domains from cholinesterase assemble with one proline-rich attachment domain (PRAD) in the secretory pathway. *EMBO (Eur. Mol. Biol. Organ.) J.* 17:6178–6187.
- Sketelj, J., and M. Brzin. 1985. Asymmetric molecular forms of acetylcholinesterase in mammalian skeletal muscles. *J. Neurosci. Res.* 14:95–103.
- Small, D.H., G. Reed, B. Whitefield, and V. Nurcombe. 1995. Cholinergic regulation of neurite outgrowth from isolated chick sympathetic neurons in culture. *J. Neurosci.* 15:144–151.
- Steinbach, J.H. 1981. Developmental changes in acetylcholine receptor aggregates at rat skeletal neuromuscular junctions. *Dev. Biol.* 84:267–276.
- Sternfeld, M., G. Ming, H. Song, K. Sela, R. Timberg, M. Poo, and H. Soreq. 1998. Acetylcholinesterase enhances neurite growth and synapse development through alternative contributions of its hydrolytic capacity, core protein, and variable C termini. *J. Neurosci.* 18:1240–1249.
- Toutant, J.P., and J. Massoulié. 1988. Cholinesterases: tissue and cellular distribution of molecular forms and their physiological regulation. In *Handbook of Experimental Pharmacology*. Volume 86. V.P. Whittaker, editor. Springer-Verlag, 225–265.
- Toutant, J.P., J. Massoulié, and S. Bon. 1985. Polymorphism of pseudocholinesterase in *Torpedo marmorata* tissues: comparative study of the catalytic and molecular properties of this enzyme with acetylcholinesterase. *J. Neurochem.* 44:580–592.
- Tsim, K.W.K., W.R. Randall, and E.A. Barnard. 1988a. An asymmetric form of muscle acetylcholinesterase contains three subunit types and two enzymic activities in one molecule. *Proc. Natl. Acad. Sci. USA.* 85:1262–1266.
- Tsim, K.W., W.R. Randall, and E.A. Barnard. 1988b. Synaptic acetylcholinesterase of chicken muscle changes during development from a hybrid to a homogeneous enzyme. *EMBO (Eur. Mol. Biol. Organ.) J.* 7:2451–2456.
- Tybulewicz, V.L., C.E. Crawford, P.K. Jackson, R.T. Bronson, and R.C. Mulligan. 1991. Neonatal lethality and lymphopenia in mice with a homozygous disruption of the c-abl proto-oncogene. *Cell.* 65:1153–1163.
- Vigny, M., V. Gisiger, and J. Massoulié. 1978. “Nonspecific” cholinesterase and acetylcholinesterase in rat tissues: molecular forms, structural and catalytic properties, and significance of the two enzyme systems. *Proc. Natl. Acad. Sci. USA.* 75:2588–2592.
- Vigny, M., G.R. Martin, and G.R. Grotendorst. 1983. Interactions of asymmetric forms of acetylcholinesterase with basement membrane components. *J. Biol. Chem.* 258:8794–8798.
- Wecker, L., R.E. Mrak, and W.D. Dettbarn. 1986. Evidence of necrosis in human intercostal muscle following inhalation of an organophosphate insecticide. *Fund. Appl. Toxicol.* 6:172–174.
- Whately, J.C., N.M. Nass, and H.A. Lester. 1979. Numerical reconstruction of the quantal event at nicotinic synapses. *Biophys. J.* 27:145–164.
- Yagi, T., Y. Ikawa, K. Yoshida, Y. Shigetani, N. Takeda, I. Mabuchi, T. Yamamoto, and S. Aizawa. 1990. Homologous recombination at *c-fyn* locus of mouse embryonic stem cells with use of diphtheria toxin A-fragment gene in negative selection. *Proc. Natl. Acad. Sci. USA.* 87:9918–9922.
- Younkin, S.G., C. Rosenstein, P.L. Collins, and T.L. Rosenberry. 1982. Cellular localization of the molecular forms of acetylcholinesterase in rat diaphragm. *J. Biol. Chem.* 257:13630–13637.