

### ERK1/2 MAP kinases promote cell cycle entry by rapid, kinase-independent disruption of retinoblastoma-lamin A complexes

Javier Rodríguez, Fernando Calvo, José M. González, Berta Casar, Vicente Andrés, and Piero Crespo

Vol. 191 No. 5, November 29, 2010. Pages 967–979.

The authors have detected a labeling error in Fig. 3 A. The corrected panel appears below.

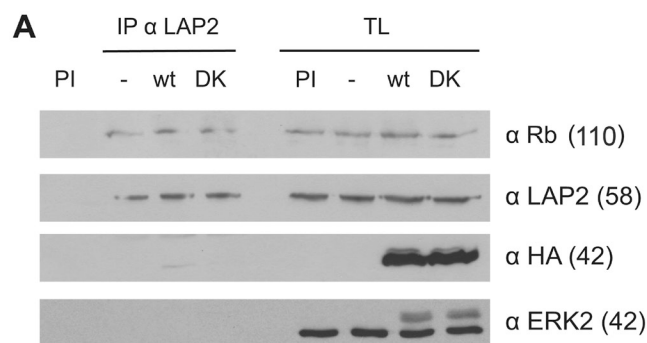


Figure 3. **ERK2 does not affect other lamin A and Rb interactions.** (A) ERK2 does not affect LAP2 $\alpha$ -Rb interaction. NIH3T3 cells were transfected with 1  $\mu$ g each of vector (-), HA-ERK2-NLS-wt (wt), and HA-ERK2-DK (DK), grown until confluence, and kept in 0.5% CS for 18 h. Cellular lysates were immunoprecipitated with an antibody against LAP2 $\alpha$  or with pre-immune serum (PI), and immunoprecipitates (IP) and total lysates (TL) were probed for the indicated proteins ( $\alpha$  protein of interest).