

Smads, TAK1, and Their Common Target ATF-2 Play a Critical Role in Cardiomyocyte Differentiation

Koshiro Monzen,* Yukio Hiroi,* Sumiyo Kudoh,* Hiroshi Akazawa,‡ Toru Oka,* Eiki Takimoto,* Doubun Hayashi,* Toru Hosoda,* Masahiro Kawabata,§ Kohei Miyazono,§ Shunsuke Ishii,|| Yoshio Yazaki,|| Ryozi Nagai,* and Issei Komuro‡

*Department of Cardiovascular Medicine, University of Tokyo Graduate School of Medicine, Tokyo 113-8655, Japan; ‡Department of Cardiovascular Science and Medicine, Chiba University Graduate School of Medicine, Chiba 260-8670, Japan; §Department of Biochemistry, The Cancer Institute of the Japanese Foundation for Cancer Research, Tokyo 170-8455, Japan; ||The Laboratory of Molecular Genetics, Tsukuba Life Science Center, The Institute of Physical and Chemical Research (RIKEN), Tsukuba, Ibaraki 305-0074, Japan; and ¶International Medical Center of Japan, Tokyo 162-8655, Japan

Abstract. We previously demonstrated that bone morphogenetic proteins (BMPs) induce cardiomyocyte differentiation through the mitogen-activated protein kinase kinase TAK1. Transcription factors Smads mediate transforming growth factor- β signaling and the ATF/CREB family transcription factor ATF-2 has recently been shown to act as a common target of the Smad and the TAK1 pathways. We here examined the role of Smads and ATF-2 in cardiomyocyte differentiation of P19CL6, a clonal derivative of murine P19 cells. Although P19CL6 efficiently differentiates into cardiomyocytes when treated with dimethyl sulfoxide, P19CL6noggin, a P19CL6 cell line constitutively overexpressing the BMP antagonist noggin, did not differentiate into cardiomyocytes. Cooverexpression of Smad1, a ligand-specific Smad, and Smad4, a common Smad, restored the ability of P19CL6noggin to differen-

tiate into cardiomyocytes, whereas stable overexpression of Smad6, an inhibitory Smad, completely blocked differentiation of P19CL6, suggesting that the Smad pathway is necessary for cardiomyocyte differentiation. ATF-2 stimulated the β MHC promoter activity by the synergistic manner with Smad1/4 and TAK1 and promoted terminal cardiomyocyte differentiation of P19CL6noggin, whereas overexpression of the dominant negative form of ATF-2 reduced the promoter activities of several cardiac-specific genes and inhibited differentiation of P19CL6. These results suggest that Smads, TAK1, and their common target ATF-2 cooperatively play a critical role in cardiomyocyte differentiation.

Key words: bone morphogenetic protein • Smad • ATF-2 • cardiomyocyte differentiation • P19CL6

Introduction

The heart forms through multiple developmental steps such as determination of the cardiac field in the mesoderm, differentiation of cardiac precursor cells into cardiomyocytes, and morphogenesis of the chambered heart (Nascone and Mercola, 1995; Olson and Srivastava, 1996). Many classical embryonic studies have implicated the mechanisms of how and where these steps take place in the developing embryos. The vertebrate heart arises from paired mesodermal primordia that migrate to the anterior ventral midline, where they fuse and undergo terminal differentiation (Rosenquist and Dehaan, 1966; Han et al., 1992). In *Xenopus* embryos, the car-

diac field is located in the dorsal mesoderm lateral to the Spemann organizer and is specified before the end of gastrulation. In this relatively early step of cardiac development, inductive signals from the adjacent deep endoderm and the organizer region have been shown to play an important role in determination of the cardiac field. It has been reported that the presence of deep dorsoanterior endoderm markedly enhances the heart formation in explants of heart primordia and that the presence of both the endoderm and the organizer is necessary and sufficient to induce beating heart tissue in ventral mesoderm explants (Nascone and Mercola, 1995). In chicks, the anterior endoderm also has been shown to induce differentiation of nonprecardiac mesodermal cells into heart tissue (Schultheiss et al., 1995). These observations suggest that the endoderm-derived signals play a vital role both in specification of the cardiac field and in dif-

Address correspondence to Issei Komuro, Department of Cardiovascular Science and Medicine, Chiba University Graduate School of Medicine, 1-8-1 Inohana, Chuo-ku, Chiba 260-8670, Japan. Tel.: 81-43-226-2097. Fax: 81-43-226-2557. E-mail: komuro-ty@umin.ac.jp

differentiation of determined cardiac precursor cells. However, little is known about the molecular mechanisms that regulate these inductive events during the formation of the heart.

Recently, *decapentaplegic* (*dpp*) and bone morphogenetic proteins (BMPs),¹ which are the members of the TGF- β superfamily, have been demonstrated to be important candidates that regulate expression of some cardiac-enriched transcription factors such as *tinman*, *Csx/Nkx-2.5*, and *GATA-4* and induce cardiomyocyte differentiation. In *Drosophila*, it has been reported that expression of *tinman* is restricted to the dorsal part of the mesoderm by the ectodermally expressed *dpp*, which is most closely related to vertebrate BMP-2 or BMP-4 (Frasch, 1995). Subsequently, experiments using chick embryos have demonstrated that expression of BMP-2/BMP-4 is detected in the ectoderm or the endoderm adjacent to the precardiac mesoderm and that ectopic expression of BMP-2 induces differentiation of nonprecardiac mesodermal cells into beating cardiomyocytes (Schultheiss et al., 1997), suggesting that BMPs play a pivotal role in induction of vertebrate cardiac development. Furthermore, gene targeting experiments have shown that normal cardiac development is impaired both in BMP-2 and BMP-4 knockout mice (Winnier et al., 1995; Zhang and Bradley, 1996). These results indicate that BMPs are required for normal cardiac development.

However, the precise molecular mechanisms by which BMPs regulate cardiogenesis have been largely unknown because of the complexity in the *in vivo* situation. From this viewpoint, we used P19CL6, an *in vitro* system of cardiomyocyte differentiation to dissect the cardiogenic pathways mediated by BMPs. P19CL6 is a clonal derivative isolated from murine P19 embryonic carcinoma cells by limiting dilution method (Habara-Ohkubo, 1996). Unlike P19 cells, whose utility is limited because of their multipotential properties, this CL6 subline efficiently differentiates into beating cardiomyocytes with adherent conditions when treated with 1% DMSO. As almost all cells differentiate into cardiomyocytes with expression of cardiac-specific genes, P19CL6 is thought to be a useful *in vitro* model to study cardiomyocyte differentiation (Habara-Ohkubo, 1996).

By using the P19CL6 *in vitro* system, we previously demonstrated that BMPs are indispensable for cardiomyocyte differentiation and that BMPs induce cardiomyocyte differentiation through TAK1, a member of the mitogen-activated protein kinase kinase kinase (MAPKKK) family that has been demonstrated to be involved in TGF- β signaling (Monzen et al., 1999). As well as TAK1, the Smad proteins have been identified and characterized as important mediators of TGF- β signal transduction pathways (Heldin et al., 1997; Attisano and Wrana, 1998; Massagué, 1998). Among the members of Smads, Smad1, Smad5, and Smad8 transduce signals from BMPs specifically, whereas Smad4 is a general partner of ligand-specific Smads. After ligand stimulation and phosphorylation of ligand-specific Smads by the receptors, Smad4 forms heterooligomers with ligand-specific Smads, which in turn translocate into the nucleus and activate transcriptional responses. Recent

studies in *Drosophila* have shown that *Dpp*-induced *tinman* gene expression is positively regulated by the Smad4 homologue Medea (Xu et al., 1998), suggesting that the Smads-mediated signal transduction pathway is also involved in the BMP-induced differentiation into cardiomyocytes. Therefore, we investigated the role of Smads in cardiomyocyte differentiation of P19CL6 in this study.

ATF-2 is a member of the ATF/CREB family transcription factors, all of which contain a DNA binding domain, b-ZIP, consisting of a cluster of basic amino acids and leucine zipper structures (Maekawa et al., 1989; Busch and Sassone-Corsi, 1990). They form dimers through their leucine zipper regions and bind to cAMP response element (CRE). ATF-2 is phosphorylated and stimulated by stress-activated protein kinases (SAPKs) such as c-Jun NH₂-terminal kinases (JNKs) and p38 at Thr-69, Thr-71, and Ser-90 which lie close to the NH₂-terminal transcriptional activation domain (Gupta et al., 1995) and binds to CRE with high affinity as a homodimer or a heterodimer with c-Jun (Macgregor et al., 1990; Hai and Curran, 1991). Recently, ATF-2 has been reported to bind directly to heterooligomers of Smads and be phosphorylated by TGF- β signaling via TAK1 and p38, indicating that ATF-2 is a common nuclear target of the Smad and the TAK1 pathways in TGF- β signaling (Hanafusa et al., 1999; Sano et al., 1999). The actions caused by both pathways are shown to be responsible for the synergistic stimulation of ATF-2 transactivating capacity (Sano et al., 1999). From this point of view, we have examined the involvement of ATF-2 in BMP-induced cardiomyocyte differentiation in this study.

Here we demonstrate several lines of evidence which suggest that Smads, TAK1, and their common downstream target ATF-2 cooperatively play a critical role in differentiation of P19CL6 cells into cardiomyocytes.

Materials and Methods

Plasmids

Expression plasmids constructed by inserting FLAG-tagged murine Smad1, Smad4, and Smad6 into pcDNA3 vectors were described previously (Imamura et al., 1997). Expression plasmids encoding the TAK1 mutants (Yamaguchi et al., 1995), murine GATA-4 (Arceri et al., 1993), and murine MEF2C cDNA (Lin et al., 1997) were provided by H. Shibuya (Okazaki, Japan), D.B. Wilson (St. Louis, MO), and E.N. Olson (Dallas, TX), respectively. Expression plasmids containing human wild-type ATF-2 cDNA and the ATF-2 mutants (ATF-2Ala and ATF-2 Δ 107) were described previously (Matsuda et al., 1991; Sano et al., 1999). Plasmids containing luciferase gene driven by β MHC, atrial natriuretic peptide (ANP), brain natriuretic peptide (BNP), and skeletal α -actin promoters were also described previously (Takano et al., 1998; Shiojima et al., 1999). Expression plasmids encoding green fluorescent protein (GFP) was commercially purchased (pEGFP-1; CLONTECH Laboratories, Inc.).

Cell Culture and Differentiation

P19CL6 cells were cultured essentially as described previously (Habara-Ohkubo, 1996). In brief, the cells were grown in a 100-mm tissue culture grade dish under adherent conditions with α -minimal essential medium (GIBCO BRL), supplemented with 10% FBS (JRH Bioscience), penicillin (100 U/ml), and streptomycin (100 μ g/ml) (growth medium), and were maintained in a 5% CO₂ atmosphere at 37°C. To induce differentiation under adherent conditions, P19CL6 cells were plated at a density of 3.7×10^5 cells in a 60-mm tissue culture grade dish with the growth medium containing 1% DMSO (differentiation medium). The medium was changed every 2 d. Days of differentiation were numbered consecutively after the first day of DMSO treatment as day 0. Natural bovine BMP cocktail

¹Abbreviations used in this paper: ANP, atrial natriuretic peptide; BNP, brain natriuretic peptide; BMP, bone morphogenetic protein; CBP, CREB-binding protein; CRE, cAMP response element; GFP, green fluorescent protein; RT, reverse transcription; SAPK, stress-activated protein kinase.

(Sangi) which contains almost all types of bone-derived BMPs including BMP-2 and BMP-4 was added into the differentiation medium at a final concentration of 100 ng/ml.

Stable Transformants

Establishment of P19CL6noggin was described previously (Monzen et al., 1999). To isolate the permanent cell line P19CL6Smad6, P19CL6 cells were transfected with pcDNA3-Smad6 (Imamura et al., 1997) by the lipofection method (Tfx™ Reagents; Promega). Stable transformants were selected with 400 µg/ml of neomycin (G418), and six independent cell lines were cloned.

Transfection and Reporter Assay

To examine the differentiation ability of P19CL6 and P19CL6noggin cells, the cells were transfected with expression vectors containing Smad1, Smad4, Smad6, the TAK1 mutants, and the ATF-2 mutants on day 3 of differentiation according to the lipofection method as recommended (Promega). The morphological features and the beating ability of the cells were observed accompanied by immunostaining with MF20 on day 12 or day 14 as described below. To test the promoter activities, the cells were transfected simultaneously with effector and reporter plasmids on day 5 by the calcium phosphate method and then the cell lysates were extracted on day 7. The luciferase activities were measured as described previously (Takano et al., 1998).

Immunofluorescence

Immunostaining with MF20, a monoclonal antibody against sarcomeric MHC, was performed as described previously (Bader et al., 1982) using anti-mouse immunoglobulin G conjugated with tetramethyl rhodamine isothiocyanate as the secondary antibody. MF20-positive areas were measured on day 14 by directly tracing the stained areas on a photograph. Immunostaining with anti-FLAG antibody was performed as described previously (Zhu et al., 1999) using fluorescein isothiocyanate-conjugated goat anti-mouse immunoglobulin G as the secondary antibody.

RNA Analysis

Total RNA was extracted by the acid guanidine method (RNAzol B™; Biotech Laboratories, Inc.), and Northern blot analysis was performed as described previously (Monzen et al., 1999) with 10 µg of total RNA from each sample for Smad6, GATA-4, MEF2C, MHC, MLC2v, and ATF-2. The following cDNA fragments were used as probes: the EcoRI fragment of pcDNA3 containing murine Smad6 cDNA (Imamura et al., 1997), the EcoRI fragment of pMT2 containing murine GATA-4 cDNA (Arceri et al., 1993), the EcoRI fragment of pcDNA1 containing murine MEF2C cDNA (Lin et al., 1997), the PstI fragment of pMHC25 containing rat skeletal muscle MHC cDNA (Takano et al., 1998), the EcoRI fragment of pCRII containing PCR product obtained by using oligonucleotide primers specific for MLC2v (Lyons et al., 1995), and the XbaI/HincII fragment of pact-ATF-2 containing human ATF-2 cDNA (Sano et al., 1999). For the analysis of Csx/Nkx-2.5 mRNA, reverse transcription (RT)-PCR was performed as described previously (Monzen et al., 1999).

Detection of Phosphorylated ATF-2 Protein

To examine the phosphorylation of endogenous ATF-2, whole cell extracts from the P19CL6 cells on day 0 and day 6 of differentiation were prepared as described previously (Shiojima et al., 1999). The cell extracts were analyzed by SDS-PAGE followed by Western blotting. The phosphorylation of ATF-2 was examined using Phosphoplus ATF-2 (New England Biolabs, Inc.), which detects phosphorylation of Thr-71 specifically. The protocols of SDS-PAGE and Western blot analysis were described previously (Zhu et al., 1999).

Results

Coexpression of Smad1 and Smad4 Restored the Ability of P19CL6noggin Cells to Differentiate into Cardiomyocytes

To elucidate the precise molecular mechanisms by which BMP signaling regulates cardiomyocyte differentiation,

we used the P19CL6 in vitro system. When cultured in growth medium without DMSO, P19CL6 cells grew well and did not differentiate into any specific cells including cardiomyocytes (Fig. 1 A, a and b). When 1% DMSO was added to the medium, P19CL6 efficiently differentiated into mononucleated, spontaneously contracting cardiomyocytes, immunostained by antisarcomeric MHC antibody MF20 (Fig. 1 A, c and d). As described previously (Habara-Ohkubo, 1996; Monzen et al., 1999), spontaneous beating was first observed on a limited area on day 10 (10 d after the initiation of DMSO treatment), and subsequently, the majority of cells started to beat synchronously. To test the requirement of BMPs for cardiomyocyte differentiation, we previously established the permanent cell line named P19CL6noggin, which constitutively overexpresses the BMP antagonist noggin (Monzen et al., 1999). In contrast to parental P19CL6 cells, P19CL6noggin cells did not differentiate into cardiomyocytes even when they were treated with 1% DMSO (Fig. 1 A, g), suggesting that BMPs are indispensable for cardiomyocyte differentiation. To elucidate whether Smads may mediate BMP-induced cardiomyocyte differentiation of P19CL6, P19CL6noggin cells were transfected with expression plasmids containing Smad1 or Smad4 on day 3 by the lipofection method and the differentiation ability was assessed around day 14. Smad1 is one of ligand-specific Smads and transduces signals from BMPs specifically, whereas Smad4 is a general partner of ligand-specific Smads. Unlike the control P19CL6noggin cells, the cells transfected simultaneously with Smad1 and Smad4 partially differentiated into beating cardiomyocytes positive for MF20 by the treatment with DMSO (Fig. 1 A, j). On the other hand, the cells transfected with Smad1 alone or Smad4 alone did not differentiate into cardiomyocytes (Fig. 1 A, h and i). The same results were obtained with at least three independent cell lines.

Translocation of Smads into the nucleus and subsequent transcriptional activation have been reported to require heterooligomer formation of ligand-specific Smads and the common mediator Smad4 after ligand stimulation and phosphorylation of ligand-specific Smads by the receptors (Lagna et al., 1996; Macias-Silva et al., 1996). To clarify whether overexpression of exogenous Smad1 and Smad4 causes nuclear accumulation of the Smad proteins, we examined the localization of exogenous FLAG-tagged Smad1 in P19CL6noggin cells using anti-FLAG antibody. P19CL6noggin cells were transfected with both expression plasmids carrying FLAG-tagged Smad1 and those containing Smad4, and immunostained by anti-FLAG antibody 12 h later. In the absence of BMP stimulation, the staining was highly positive in the cytosol, and less but surely positive in the nucleus (Fig. 1 B, a–d). On the other hand, FLAG signals were detected predominantly in the nucleus after BMP stimulation (Fig. 1 B, e and f). These observations suggest that a part of overexpressed Smads can move into the nucleus even in the absence of BMP stimulation and that the sufficient ligand stimulation accelerates the translocation of exogenous Smads into the nucleus.

To characterize the correlation between overexpression of Smads and the P19CL6 differentiation into cardiomyocytes at the cellular level, we examined whether the differentiation is surely induced in the cells overexpressing ex-

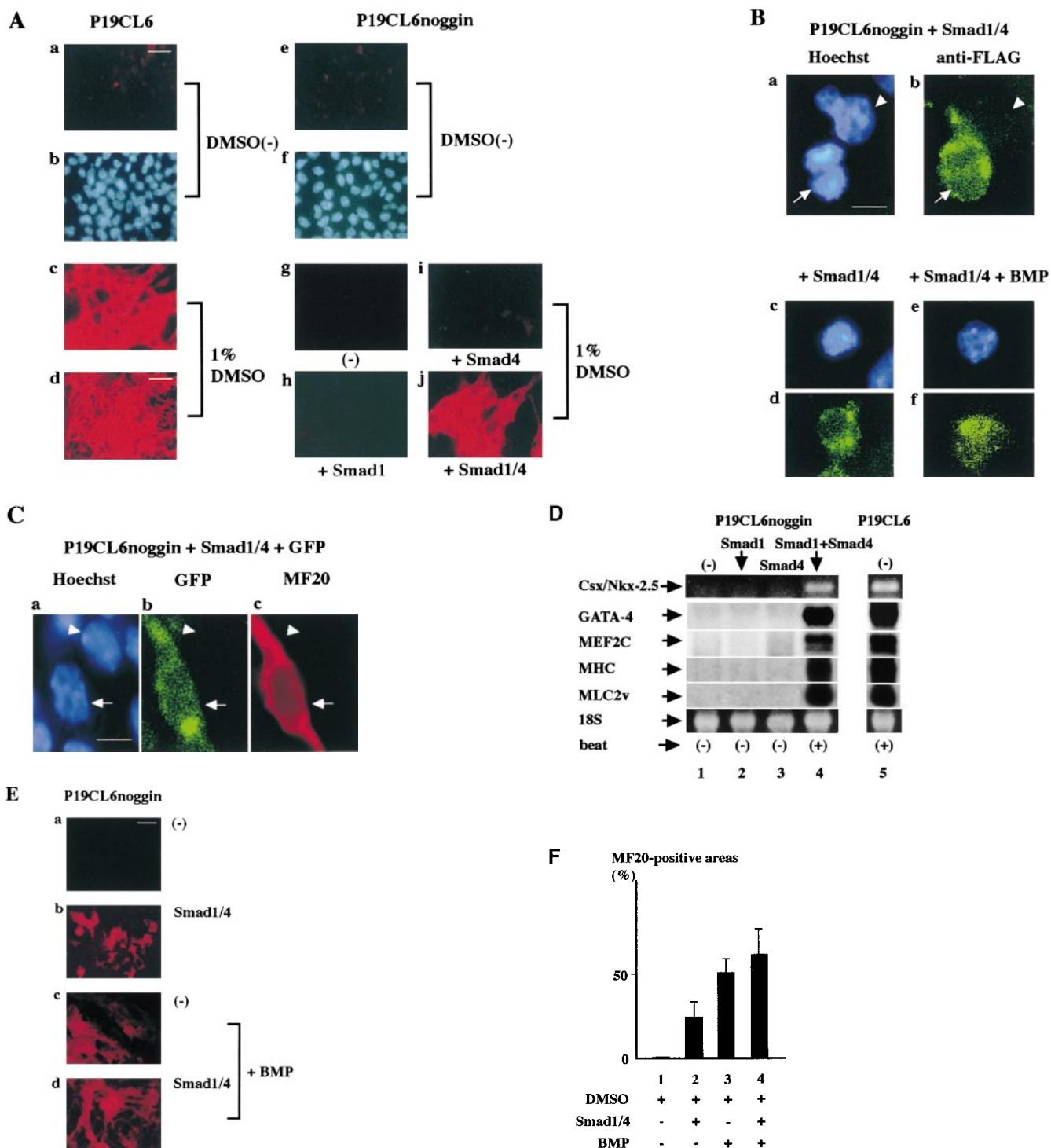


Figure 1. Simultaneous overexpression of Smad1 and Smad4 restored the ability of P19CL6noggin cells to differentiate into cardiomyocytes. (A) P19CL6 cells (a–d) and P19CL6noggin cells (e–j) were cultured in growth medium (a, b, e, and f) or in differentiation medium containing 1% DMSO (c, d, g–j). Both parental P19CL6 cells (a and b) and P19CL6noggin cells (e and f) grew well and remained undifferentiated in growth medium. Parental P19CL6 cells differentiated into beating cardiomyocytes when cultured in the medium containing 1% DMSO. On day 14, most P19CL6 cells had differentiated into mononucleated contracting cardiomyocytes (c and d). On the other hand, P19CL6noggin cells did not differentiate into beating cardiomyocytes even after treatment with DMSO (g). The P19CL6noggin cells transfected with Smad1 alone (h) or Smad4 alone (i) did not differentiate into cardiomyocytes, whereas cooverexpression of Smad1 and Smad4 induced differentiation of P19CL6noggin cells into cardiomyocytes in the presence of DMSO (j). The cells were stained with antisarcomeric myosin heavy chain antibody (MF20) (a, c–e, g–j) or Hoechst dye (b and f). Bars, 250 μ m (d) and 50 μ m (others). (B) The localization of exogenous Smad1 in P19CL6noggin cells. In the presence or the absence of BMP (100 ng/ml), P19CL6noggin cells were transfected with expression vectors containing FLAG-tagged Smad1 and those containing Smad4, and immunostained by anti-FLAG antibody 12 h later. (a, c, and e) Hoechst dye; (b, d, and f) immunostaining with anti-FLAG antibody. Arrows,

ogenous Smads. P19CL6noggin cells were transfected simultaneously with expression vectors carrying Smad1/4 and those containing GFP on day 3 and then were stained by MF20 on day 12. The immunostaining by MF20 were detected in GFP-positive cells (Fig. 1 C, arrows) but not in GFP-negative cells (Fig. 1 C, arrowheads), suggesting that the myocyte differentiation was induced in the cells overexpressing exogenous Smads but not in the cells which were not transfected with Smads.

In parental P19CL6 cells, expression of cardiac transcription factors such as Csx/Nkx-2.5, GATA-4, and MEF2C was detected from day 6 and expression of contractile protein genes such as MHC and MLC2v was observed on day 12 (Fig. 1 D, lane 5; Fig. 2 B, lanes 1–3). Expression of these genes was induced also in P19CL6noggin cells transfected simultaneously with Smad1 and Smad4, but not in the control P19CL6noggin cells or the cells transfected with Smad1 or Smad4 alone (Fig. 1 D, lanes 1–4). These results indicate that cooverexpression of Smad1 and Smad4 restored the ability of P19CL6noggin cells to differentiate into cardiomyocytes with concomitant expression of some set of cardiac-specific genes, suggesting that Smads may mediate the BMP-induced cardiomyocyte differentiation.

We further examined whether ligand stimulation enhances the differentiation efficiency of P19CL6noggin cells transfected with Smad1 and Smad4. The cells were cultured with or without addition of the BMP protein to the culture media at the concentration of 100 ng/ml from day 0. The cells were transfected with Smad1 and Smad4 on day 3 by the lipofection method. To estimate the differentiation efficiency, the percentage of areas positive for MF20 were measured on day 14. When the BMP protein was added to the media, some P19CL6noggin cells differ-

entiated into cardiomyocytes as we observed previously (Monzen et al., 1999), implying that a sufficient amount of BMP protein restored the ability of P19CL6noggin cells to differentiate into cardiomyocytes. P19CL6noggin cells transfected with Smad1 and Smad4 more efficiently differentiated into cardiomyocytes stained by MF20 in the presence of the sufficient ligand stimulation compared with the transfected cells in the absence of BMP (Fig. 1 E). The percentage of positive areas was increased from ~25 to 60% by the addition of BMP in the Smad1/4-transfected P19CL6noggin cells and from ~49 to 60% by overexpression of Smads in the presence of BMP stimulation, although the latter increase was not significant (Fig. 1 F). These results suggest that excessive ligand stimulation overcomes the antagonistic effect of noggin and enhances the differentiation efficiency through the Smad pathway and further confirm the notion that Smads are involved in BMP-mediated cardiomyocyte differentiation.

Overexpression of Smad6, an Inhibitory Smad, Blocked Cardiomyocyte Differentiation of P19CL6 Cells

Smad6 has been identified and characterized as an inhibitory Smad, which forms stable association with BMP type I receptors and interferes with the phosphorylation of Smad1 (Imamura et al., 1997). Subsequent studies have revealed that Smad6 also competes with Smad4 for binding to Smad1 to block BMP signaling (Hata et al., 1998). To elucidate the requirement of the Smad pathway for cardiomyocyte differentiation, we isolated P19CL6 clones which permanently overexpress murine Smad6 under the control of human cytomegalovirus enhancer and designated them P19CL6Smad6. Northern blot analysis revealed that abundant expression of exogenous Smad6 mRNA was observed throughout differentiation in P19CL6Smad6 cells (Fig. 2 B, lanes 4–6). In contrast to parental P19CL6 cells, P19CL6Smad6 cells did not differentiate into MF20-positive beating cardiomyocytes by the treatment with DMSO (Fig. 2 A). The same results were obtained with at least four independent P19CL6Smad6 cell lines.

Furthermore, RT-PCR and Northern blot analyses revealed that, unlike parental P19CL6 cells, neither expression of cardiac transcription factors such as Csx/Nkx-2.5, GATA-4, and MEF2C nor that of contractile protein genes such as MHC and MLC2v was detected in P19CL6Smad6 cells during the course of the observation (Fig. 2 B). These results suggest that the Smad pathway is essential for expression of cardiac-specific genes and differentiation of P19CL6 cells into cardiomyocytes.

The Expression Levels and the Activity of ATF-2 Were Increased during the Course of Differentiation of P19CL6 Cells

Although we have clarified that both the Smad pathway and the TAK1 pathway play an important role in BMP-induced cardiomyocyte differentiation in this study and the previous study (Monzen et al., 1999), the relation between both pathways has been largely unknown. Recently, however, the transcription factor ATF-2 has been reported to be a common nuclear target of the Smad and the TAK1 pathways and play a central role in TGF- β signaling (Sano

a FLAG-positive cell; arrowheads, a FLAG-negative cell. Bar, 20 μ m. (C) The correlation between overexpression of Smad1/4 and the P19CL6 differentiation. P19CL6noggin cells were transfected with expression plasmids encoding Smad1 and Smad4 along with GFP expression plasmids on day 3 and then immunostained by MF20 on day 12. (a) Hoechst dye; (b) GFP; (c) MF20. Arrows, a GFP-positive cell; arrowheads, a GFP-negative cell. Bar, 20 μ m. (D) Expression of cardiac-specific genes in P19CL6noggin cells overexpressing Smad1 and/or Smad4. RNA was extracted from parental P19CL6 cells and P19CL6noggin cells transfected with Smad1 and/or Smad4 on day 14. RT-PCR was performed for the analysis of Csx/Nkx-2.5 mRNA. 10 μ g of RNA from each sample was subjected to Northern blot analysis for other genes. Ethidium bromide staining of rRNA is presented at the bottom to show that the same amount of intact RNA was loaded in each lane. (E and F) Ligand stimulation enhanced the differentiation efficiency of P19CL6noggin cells transfected with Smad1/4. (E) Immunostaining with MF20. P19CL6noggin cells were cultured with (c and d) or without BMP (a and b) in the culture media at the concentration of 100 ng/ml from day 0. The cells were transfected with Smad1/4 on day 3 by the lipofection method (b and d). The cells were then immunostained with MF20 on day 14. By the treatment with BMP, P19CL6noggin cells transfected with Smad1/4 more efficiently differentiated into MF20-positive cardiomyocytes. Bar, 250 μ m. (F) Quantification of the areas stained by MF20 in P19CL6noggin cells. The areas of at least three fields were measured for each cell line under the same conditions. The results are expressed as the mean (%) \pm SD.

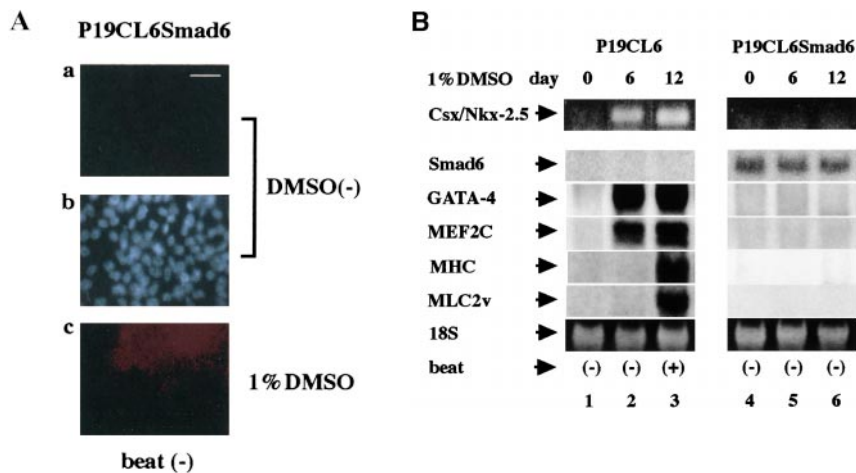


Figure 2. Inhibition of cardiomyocyte differentiation by overexpression of Smad6. (A) In the absence of DMSO, P19CL6Smad6 cells grew well and did not differentiate into any specific cells like parental P19CL6 cells (a and b). When 1% DMSO was added to the media, P19CL6Smad6 cells did not differentiate into MF20-positive beating cardiomyocytes in contrast to parental P19CL6 cells (c). The cells were stained with MF20 (a and c) or Hoechst dye (b). Bar, 50 μ m. (B) Expression of cardiac-specific genes was detected in P19CL6 cells but not in P19CL6Smad6 cells. RNA was prepared from parental P19CL6 cells and P19CL6Smad6 cells on day 0 (before DMSO treatment) (lanes 1 and 4), day 6

(lanes 2 and 5), and day 12 (lanes 3 and 6). RT-PCR was performed to analyze *Csx/Nkx-2.5* mRNA. 10 μ g of RNA from each sample was subjected to Northern blot analysis for other genes. Ethidium bromide staining of rRNA is presented at the bottom to show that the same amount of intact RNA was loaded in each lane.

et al., 1999). Therefore, we examined the role of ATF-2 in BMP-induced cardiomyocyte differentiation. First, we performed Northern blot analysis to examine the expression level of ATF-2 mRNA during cardiomyocyte differentiation of P19CL6. Expression of ATF-2 mRNA was detected even before the treatment with DMSO (on day 0), but became more abundant after DMSO treatment (Fig. 3 A). We further examined whether the ATF-2 protein was activated during differentiation of P19CL6. Western blot analysis using anti-phospho-ATF-2 antibody, which recognizes only activated ATF-2, revealed that ATF-2 was slightly activated even before the differentiation and its activity was enhanced on day 6 (Fig. 3 B). These results suggest that not only expression of ATF-2 mRNA but also the activity of the ATF-2 protein are upregulated during differentiation induced by DMSO treatment.

ATF-2 Was Involved in Transactivation of the β MHC Promoter with Synergistic Enhancement by Smads and TAK1

To examine the role of ATF-2 in the regulation of cardiac-specific gene promoters, cotransfection experiments were performed using reporter plasmids containing luciferase gene driven by the β MHC promoter in the presence or the absence of BMP stimulation. Expression vectors encoding Smad1/4, the constitutively active form of TAK1 (caTAK1), and ATF-2 were used as effectors. P19CL6 cells cultured with 1% DMSO were transfected with effector and reporter plasmids on day 5 by the calcium phosphate method. The cell lysates were extracted on day 7 (48 h after transfection) and the luciferase activities were analyzed. The BMP treatment was performed at a final concentration of 100 ng/ml for 24 h before the lysate preparation. The β MHC promoter was slightly activated by BMP treatment (1.8-fold; Fig. 4 A, column 1). Smad1/4 and caTAK1 mildly stimulated this promoter activity, and cooverexpression of Smad1/4 and caTAK1 synergistically enhanced the activity by 3.9-fold in the presence of BMP treatment (Fig. 4 A, columns 2–4). ATF-2 stimulated this promoter activity by 2.1-fold in the absence of BMP treat-

ment and by 2.5-fold in the presence of BMP treatment (Fig. 4 A, column 5). The degree of activation of this promoter by ATF-2 was slightly enhanced by cooverexpression of Smad1/4 or caTAK1 (Fig. 4 A, columns 6 and 7). Furthermore, this promoter activity was strongly enhanced by cooverexpression of all three effectors together, resulting in a 3.1- and 6.4-fold stimulation in the absence and presence of BMP treatment, respectively (Fig. 4 A, column 8). These results suggest that cooverexpression of ATF-2, Smad1/4, and caTAK1 synergistically activates the β MHC promoter during the course of differentiation in P19CL6 cells.

To confirm that ATF-2, Smads, and TAK1 cooperatively activate the β MHC promoter, we next examined whether Smad6 (an inhibitory Smad) or the dominant negative form of TAK1 (dnTAK1) inhibits transactivation of this promoter by ATF-2. Overexpression of Smad6 or dnTAK1 partially inhibited the ATF-2-induced promoter activation both in the presence or in the absence of BMP treatment (Fig. 4 B). These results suggest that the blockade either of the Smad or the TAK1 pathway can inhibit the stimulatory effect of ATF-2 on the β MHC promoter and that ATF-2 induces the transactivation of this promoter through BMP signaling.

Overexpression of the Dominant Negative Form of ATF-2 Inhibited Cardiomyocyte Differentiation of P19CL6

To further clarify the role of ATF-2 in cardiomyocyte differentiation, we transfected expression plasmids containing two ATF-2 mutants, ATF-2 Δ 1a and ATF-2 Δ 107, into parental P19CL6 cells. ATF-2 Δ 1a is the mutant in which the three SAPK phosphorylation sites (Thr-69, Thr-71, and Ser-90) are replaced by alanine, and ATF-2 Δ 107 is the truncated mutant which lacks the NH₂-terminal 107 amino acids including all three SAPK phosphorylation sites (Sano et al., 1999). These two mutants cannot be phosphorylated by TGF- β signaling via TAK1 and p38 and are expected to act as dominant negative forms. The cells cultured with 1% DMSO were transfected on day 3 by the li-

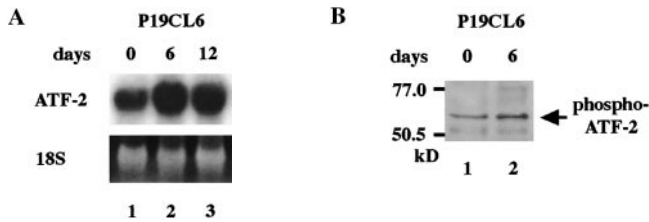


Figure 3. The expression levels and the activity of ATF-2 were increased during differentiation of P19CL6 cells. (A) RNA was prepared from parental P19CL6 cells on day 0 (lane 1), day 6 (lane 2), and day 12 (lane 3). 10 μ g of RNA from each sample was subjected to Northern blot analysis for ATF-2 mRNA. Ethidium bromide staining of rRNA is presented at the bottom to show that the same amount of intact RNA was loaded in each lane. (B) Whole cell extracts from P19CL6 cells on day 0 (lane 1) and day 6 (lane 2) of differentiation were prepared and analyzed by SDS-PAGE followed by Western blotting. The phosphorylation of ATF-2 was examined using anti-phospho-ATF-2 antibody which detects phosphorylation of Thr-71 specifically.

fection method, and then the differentiation ability was assessed at day 14. P19CL6 cells transfected with either of the two ATF-2 mutants less efficiently differentiated into MF20-positive beating cardiomyocytes than the control P19CL6 cells (Fig. 5 A). The percentage of positive areas stained by MF20 was estimated to be \sim 50% lower in the cells transfected with the mutants than in the control P19CL6 cells (Fig. 5 B).

To clarify the correlation between expression of the ATF-2 mutants and the phenotype of the P19CL6 differentiation at the cellular level, we examined whether cardiomyocyte differentiation was inhibited in the cells overexpressing the ATF-2 mutants. P19CL6noggin cells were transfected simultaneously with expression vectors encoding ATF-2 Δ 107 and those containing GFP on day 3, and then were stained by MF20 on day 12. The MF20-positive signals were detected in GFP-negative cells (Fig. 5 C, arrows) but not in GFP-positive cells (Fig. 5 C, arrowheads), suggesting that the myocyte differentiation was inhibited in the cells overexpressing the dominant negative form of ATF-2 but not in the cells which were not transfected with the ATF-2 mutant.

Northern blot analysis revealed that the expression level of cardiac genes such as GATA-4, MEF2C, and MLC2v was reduced in the cells transfected with ATF-2 Δ 107 (Fig. 5 D). To confirm the inhibitory effects of these dominant negative mutants on cardiomyocyte differentiation, we further examined the promoter activities of cardiac genes. P19CL6 cells were cultured with 1% DMSO and transfected on day 5 by the calcium phosphate method with effector plasmids carrying ATF-2 Δ 107 and reporter plasmids containing promoters of several cardiac genes such as β MHC, ANP, BNP, and skeletal α -actin. The cell lysates were extracted on day 7 and the luciferase activities were analyzed. The ATF-2 mutant significantly inhibited the β MHC, ANP, and BNP promoter activities whereas the promoter activity of skeletal α -actin was not affected (Fig. 5 E). All these results suggest that overexpression of the dominant negative form of ATF-2 inhibits expression of at least some set of cardiac-specific genes and terminal cardiomyocyte differentiation in this P19CL6 system.

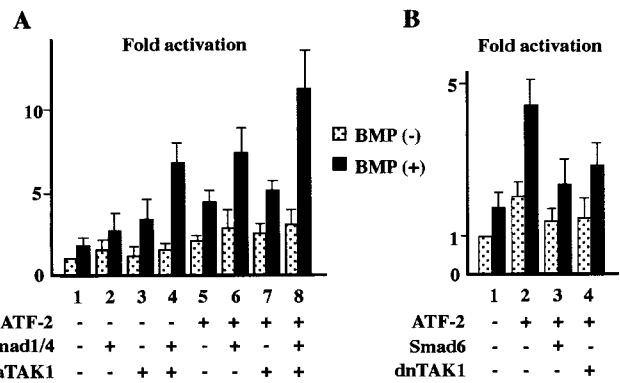


Figure 4. ATF-2 stimulated the promoter activity of β MHC gene by the synergistic manner with Smad1/4 and TAK1. P19CL6 cells were cultured in the presence of 1% DMSO and were transfected on day 5 by the calcium phosphate method with reporter plasmids containing luciferase gene driven by β MHC promoter and expression plasmids carrying ATF-2, Smad1, Smad4, and caTAK1 (A) and ATF-2, Smad6, and dnTAK1 (B) as effector plasmids. The cell lysates were extracted on day 7 and the luciferase activities were analyzed. The degree of activation is indicated as means \pm SD. Dotted columns, BMP treatment (-). Closed columns, BMP treatment (+).

Overexpression of ATF-2 Enhanced the BMP-induced Cardiomyocyte Differentiation of P19CL6noggin

To examine whether ATF-2 promotes cardiomyocyte differentiation of P19CL6, we transfected expression plasmids encoding wild-type ATF-2 along with those carrying Smads and TAK1 mutants into P19CL6noggin cells. The cells were transfected with the expression vectors on day 3 by the lipofection method and then were immunostained by MF20 to evaluate the differentiation efficiency. Overexpression of dnTAK1 partially inhibited Smad1/4-induced cardiomyocyte differentiation of P19CL6noggin whereas Smad6 blocked caTAK1-induced differentiation (Fig. 6, columns 2–5), suggesting that Smads and TAK1 act in parallel, at least partially, against their downstream targets. Cooverexpression of Smad1/4 and caTAK1 enhanced the differentiation efficiency (Fig. 6, column 6). Overexpression of wild-type ATF-2 alone restored the ability of P19CL6noggin to differentiate into cardiomyocytes (Fig. 6, column 7), and the differentiation efficiency was enhanced by simultaneous overexpression along with Smad1/4 or caTAK1 (Fig. 6, columns 8 and 9). Furthermore, differentiation of P19CL6noggin into cardiomyocytes was most strongly induced by overexpression of all inducers together (Fig. 6, column 10). These results suggest that ATF-2, Smad1/4, and caTAK1 cooperatively induce differentiation of P19CL6noggin into cardiomyocytes.

Discussion

In this study, we obtained the following results: (a) The Smad pathway is necessary for BMP-induced cardiomyocyte differentiation in P19CL6; (b) ATF-2, a common nuclear target of the Smad and the TAK1 pathways, is involved in transcriptional activation of some cardiac-specific genes and terminal cardiomyocyte differentiation in

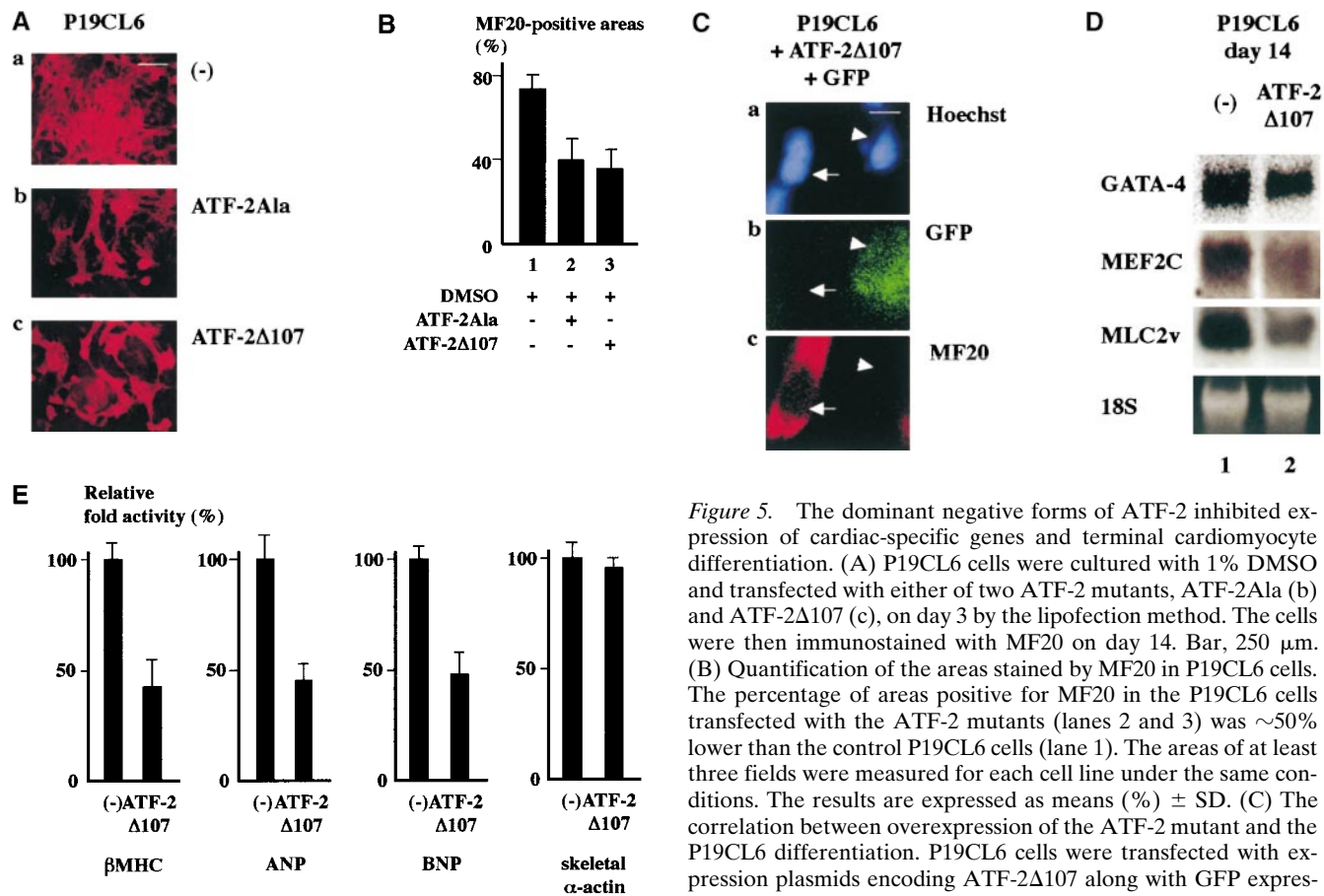


Figure 5. The dominant negative forms of ATF-2 inhibited expression of cardiac-specific genes and terminal cardiomyocyte differentiation. (A) P19CL6 cells were cultured with 1% DMSO and transfected with either of two ATF-2 mutants, ATF-2Ala (b) and ATF-2Δ107 (c), on day 3 by the lipofection method. The cells were then immunostained with MF20 on day 14. Bar, 250 μm. (B) Quantification of the areas stained by MF20 in P19CL6 cells. The percentage of areas positive for MF20 in the P19CL6 cells transfected with the ATF-2 mutants (lanes 2 and 3) was ~50% lower than the control P19CL6 cells (lane 1). The areas of at least three fields were measured for each cell line under the same conditions. The results are expressed as means (%) ± SD. (C) The correlation between overexpression of the ATF-2 mutant and the P19CL6 differentiation. P19CL6 cells were transfected with expression plasmids encoding ATF-2Δ107 along with GFP expression plasmids on day 3 and then immunostained by MF20 on day

12. (a) Hoechst dye; (b) GFP; (c) MF20. Arrows, a GFP-negative cell; arrowheads, a GFP-positive cell. Bar, 20 μm. (D) Expression of cardiac-specific genes in the control P19CL6 cells (lane 1) and P19CL6 cells transfected with ATF-2Δ107 (lane 2). RNA was prepared on day 14 and 10 μg of RNA from each sample was subjected to Northern blot analysis. Ethidium bromide staining of rRNA is presented at the bottom to show that the same amount of intact RNA was loaded in each lane. (E) P19CL6 cells were cultured with 1% DMSO and transfected on day 5 by the calcium phosphate method with effector plasmids carrying ATF-2Δ107 and reporter plasmids containing promoters of several cardiac genes such as βMHC, ANP, BNP, and skeletal α-actin. The cell lysates were extracted on day 7 and the luciferase activities were analyzed. The degree of activation is indicated as means ± SD.

P19CL6; and (c) Smads, TAK1, and ATF-2 cooperatively induce differentiation of P19CL6 cells into cardiomyocytes.

Smads Are Required for BMP-induced Cardiomyocyte Differentiation

We previously reported that BMPs induce cardiomyocyte differentiation through TAK1 (Monzen et al., 1999). In the study, we established a permanent P19CL6 cell line, P19CL6noggin, which constitutively overexpresses the BMP antagonist noggin. The secreted protein noggin was first identified as a dorsalizing factor localized in the Spemann organizer in *Xenopus* embryos (Smith and Harland, 1992). Subsequent studies have demonstrated that noggin binds specifically to BMP-2 and BMP-4 with high affinity and also to BMP-7 with lower affinity, thereby abolishing the activity of BMPs by blocking the binding of BMPs to cognate cell surface receptors (Zimmerman et al., 1996). Although almost all parental P19CL6 cells differentiated into beating cardiomyocytes when treated with 1% DMSO, P19CL6noggin cells did not differentiate into beating cardiomyocytes nor express cardiac transcription factors or contractile protein genes. The failure of differ-

entiation was rescued by overexpression of BMP-2 using adenovirus-mediated gene delivery or addition of BMP protein to the culture media, indicating that BMPs are indispensable for cardiomyocyte differentiation in this system. Furthermore, overexpression of TAK1 restored the ability of P19CL6noggin cells to differentiate into cardiomyocytes and concomitantly express some cardiac genes, whereas overexpression of the dominant negative form of TAK1 in parental P19CL6 cells inhibited cardiomyocyte differentiation. These results suggest that TAK1 plays a pivotal role in the cardiogenic BMP signaling pathway (Monzen et al., 1999).

In this study, coexpression of Smad1 and Smad4 also restored the ability of P19CL6noggin cells to differentiate into cardiomyocytes with concomitant expression of cardiac transcription factors such as Csx/Nkx-2.5, GATA-4, and MEF2C, and contractile protein genes such as MHC and MLC2v. These results suggest that Smads also mediate BMP-induced transactivation of cardiac-specific genes and induction of terminal differentiation of P19CL6 cells into cardiomyocytes. Expression of endogenous Smad1 and Smad4 was not detected in the differentiating P19CL6 cells

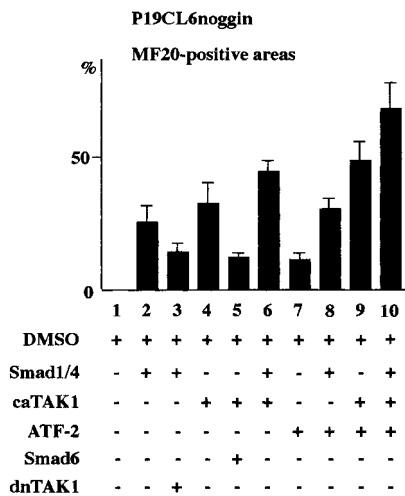


Figure 6. Overexpression of ATF-2, Smad1/4, and caTAK1 cooperatively rescued the ability of P19CL6noggin to differentiate into cardiomyocytes. P19CL6 cells were cultured in the presence of 1% DMSO and were transfected on day 3 by the lipofection method with expression plasmids carrying ATF-2, Smads, and the TAK1 mutants. The cells were then immunostained with MF20 on day 14. The percentage of areas positive for MF20 in the P19CL6 cells transfected with respective plasmids was measured at least three fields under the same conditions. The results are expressed as means (%) \pm SD.

by Northern blot analysis (data not shown), implying that expression levels of these Smads were relatively low in this cell line. The correlation between overexpression of Smads and the P19CL6 differentiation at the cellular level was confirmed by the cotransfection experiments using Smad1/4 and GFP expression plasmids followed by immunostaining with MF20, which demonstrated that only GFP-positive cells (i.e., Smads-overexpressing cells) were stained positively by MF20. The reasons why overexpression of Smad1 alone could not restore the differentiation ability remains unknown. One possibility is that only overexpression of one component of heterooligomers are not sufficient for effective heterooligomer formation and subsequent nuclear translocation in the absence of ligand stimulation. In fact, immunofluorescence experiments revealed that the majority of exogenous Smad1 was localized in the cytoplasm in P19CL6noggin cells, suggesting that only a small part of the Smad proteins can translocate into the nucleus in the absence of BMP function. Excessive amounts of both ligand-specific and common-partner Smads may be necessary for effective hetero-oligomer formation.

Overexpression of Smad6, an inhibitory Smad which has been reported to block the TGF- β superfamily signal transduction, inhibited expression of some set of cardiac-specific genes and terminal differentiation of P19CL6 cells into cardiomyocytes. These results suggest that the Smad pathway is indispensable for normal cardiomyocyte differentiation. To date, several studies have shown the importance of the Smad pathway in normal cardiac development in vivo. Gene targeting experiments in mice have revealed that Smad5 knockout mice exhibit morphological defects in the developing amnion, gut, and heart which are similar to those of BMP-2 knockout mice (Chang et al., 1999). Smad6-deficient mice also have multiple cardiovascular

abnormalities such as hyperplasia of the cardiac valves and outflow tract septation defects, indicating a function for Smad6 in the regulation of endocardial cushion transformation (Galvin et al., 2000). The latter study suggests that excess activation of the Smad pathway also causes abnormal heart development. It has been reported recently that expression of Smad6 itself is regulated by BMP-activated Smad1/5 (Ishida et al., 2000). These observations and our results imply that temporal and spacial precise regulation of the Smad activities may be important for normal cardiac development from initial cardiomyocyte differentiation to terminal cardiac morphogenesis.

ATF-2 Induces Transcriptional Activation of Cardiac Genes through the Smad and the TAK1 Pathways during Cardiomyocyte Differentiation

In the previous paper (Monzen et al., 1999) and this paper, we have provided several lines of evidence suggesting that both the Smad and the TAK1 pathways play a crucial role in cardiomyocyte differentiation. We next focused on the molecular mechanisms of how both pathways cooperatively regulate expression of cardiac genes and induce terminal cardiomyocyte differentiation. In *Xenopus* embryos, overexpression of kinase-negative TAK1 has been reported to inhibit the Smad1-induced ventralization (Shibuya et al., 1998), suggesting that the regulation by BMPs requires cooperative actions of Smads and TAK1. It is also noteworthy that MEKK-1, a component of the SAPK pathway, can selectively activate Smad2-mediated transcriptional activation in endothelial cells (Brown et al., 1999). TAK1, which also stimulates the SAPK/JNK pathway similar to MEKK-1, may activate the Smad pathway similarly. However, little had been known about the molecules that connect the Smad and the TAK1 pathways, until the transcription factor ATF-2 was proposed to be a common nuclear target of both pathways. ATF-2 has been demonstrated to bind directly to heterooligomers of Smads and be phosphorylated by TGF- β signaling via TAK1 and p38 (Hanafusa et al., 1999; Sano et al., 1999). Both pathways have been shown to synergistically stimulate ATF-2 transactivating capacity (Sano et al., 1999). From this viewpoint, we examined the involvement of ATF-2 in BMP-induced cardiomyocyte differentiation.

ATF-2 has been shown to be ubiquitously expressed in various human embryonic tissues and cell lines, with the highest expression level being observed in brain (Maekawa et al., 1989; Takeda et al., 1991). Northern blot analysis revealed that ATF-2 mRNA was abundantly expressed during the course of differentiation in P19CL6 cells and that the expression level was higher on day 6 and day 12 than on day 0 (i.e., before the initiation of DMSO treatment). Furthermore, Western blot analysis demonstrated that the phosphorylation of the ATF-2 protein was detected during differentiation of P19CL6. These results suggest that ATF-2 is one of the DMSO-inducible factors (see below) and that it may play an important role in the induction of differentiation of P19CL6.

The results of cotransfection experiments followed by reporter gene assays demonstrated that overexpression of ATF-2 alone stimulated the promoter activity of β MHC gene and that cooverexpression of ATF-2, Smad1/4, and

caTAK1 synergistically activated this promoter. Furthermore, overexpression of Smad6, an inhibitory Smad, and the dominant negative form of TAK1 partially inhibited transactivation of β MHC gene by ATF-2, suggesting that ATF-2-induced transactivation of β MHC gene depends on both the Smad and the TAK1 pathways. These results are consistent with the previous reports showing synergistic enhancement of ATF-2 activity by Smads and TAK1 using the CRE-containing promoters (Sano et al., 1999), although the β MHC promoter we used does not contain the CRE site (Strehler et al., 1985). It is possible that ATF-2 may indirectly stimulate this promoter via transactivation of some other genes such as cardiac-specific transcription factors. Further studies are necessary to elucidate the molecular cascade from ATF-2 to related genes needed for the full differentiation of cardiac precursor cells into cardiomyocytes.

ATF-2 Plays a Pivotal Role in Cardiomyocyte Differentiation of P19CL6

To test the importance of ATF-2 for the actual differentiation of P19CL6, we transfected ATF-2 mutants into P19CL6 and examined the differentiation efficiency, expression of cardiac-specific genes, and activation of promoters. Our results demonstrated that overexpression of the dominant negative form of ATF-2 (dnATF-2) partially inhibited (a) promoter activities of some cardiac genes such as β MHC, ANP, and BNP, (b) mRNA expression of GATA-4, MEF2C, and MLC2v, and (c) terminal cardiomyocyte differentiation of P19CL6 cells, indicating that ATF-2 plays a crucial role in differentiation into cardiomyocytes. The reduction of promoter activities and the differentiation efficiency by overexpression of dnATF-2 was estimated to be ~50%. This result was thought to be compatible with the transfection efficiency by the lipofection method, which was estimated to range from ~40 to 60% by counting GFP-positive cells 1 d after the transfection of GFP expression plasmids (data not shown). All these results strongly suggest that ATF-2 plays a pivotal role in transactivation of some cardiac-specific genes and terminal cardiomyocyte differentiation.

We further established the permanent P19CL6 cell line which constitutively overexpresses one of the dnATF-2 mutants, ATF-2 Δ 107 (P19CL6ATF-2 Δ 107). Unexpectedly, a part of P19CL6ATF-2 Δ 107 cells differentiated into beating cardiomyocytes by the treatment with DMSO, although the differentiation efficiency was reduced compared with parental P19CL6 (data not shown). This is probably because endogenous ATF-2 was so abundantly expressed in P19CL6 cells that stable expression of dnATF-2 could not completely block its activity. In fact, Northern blot analysis revealed that the expression level of dnATF-2 was almost the same as that of endogenous ATF-2 on day 6 in P19CL6ATF-2 Δ 107 cells (data not shown). On the other hand, transient transfection provides much higher expression of exogenous genes, so that it is probable that dnATF-2 could completely inhibit the effects of endogenous ATF-2 in the P19CL6 cells when transiently transfected. The transient transfection experiments clearly suggest that ATF-2 plays a critical role in cardiomyocyte differentiation.

In the *in vivo* situation, ATF-2 knockout mice generated by gene targeting exhibit lowered postnatal viability and growth, in addition to a defect in endochondrial ossification and a reduced number of cerebellar Purkinje cells (Reimold et al., 1996). Another group subsequently reported that mouse ATF-2 null mutants display features of a severe type of meconium aspiration syndrome (Maekawa et al., 1999). Neither embryonic lethality nor abnormal cardiac phenotype has been reported in these knockout mice, which is inconsistent with our *in vitro* results. This is possibly because genetic redundancies among the ATF/CREB family members, all of which bind to the CRE site, may rescue the phenotypes of these knockout mice. The understanding of the precise molecular requirement of the ATF/CREB family members for differentiation of cardiac precursor cells *in vivo* awaits further investigation.

Cotransfection experiments into P19CL6noggin cells using wild-type ATF-2 along with Smad1/4 and caTAK1 revealed that overexpression of wild-type ATF-2 alone restored the ability of P19CL6noggin to differentiate into cardiomyocytes, although the efficiency was relatively low probably because of the lack of BMP stimulation, and that the differentiation efficiency was most strongly enhanced when Smad1/4 and caTAK1 were also overexpressed. These results indicate that coexpression of ATF-2, Smad1/4, and caTAK1 cooperatively promotes the ability of P19CL6noggin to differentiate into cardiomyocytes and suggest that ATF-2 is involved in differentiation of P19CL6 into cardiomyocytes downstream of the Smad and the TAK1 pathways.

Both the binding of Smads with ATF-2 and phosphorylation of ATF-2 by TAK1 and p38 are thought to contribute to the enhancement of the DNA binding affinity of ATF-2 and subsequent transactivational responses. The heterooligomer of Smad3/4 has been reported to bind directly to ATF-2 through the MH1 region of Smad3/4 and the b-ZIP region of ATF-2 and enhance the transactivating capacity of ATF-2 (Sano et al., 1999). In this sense, Smads resemble adenovirus E1A, which stimulates CRE-dependent transcription via binding to the b-ZIP region of ATF-2 (Liu and Green, 1994). Expression of E1A has been shown to induce differentiation of several other cell lines such as F9 cells (Montano and Lane, 1987; Velcich and Ziff, 1989). We have preliminary data demonstrating that overexpression of E1A strongly restored the ability of P19CL6noggin cells to differentiate into cardiomyocytes, suggesting that E1A, instead of Smads, can induce cardiomyocyte differentiation through the activation of ATF-2 (Monzen and Komuro, unpublished data). Meanwhile, it has been reported that CREB-binding protein (CBP), which was originally identified as a coactivator of CREB, directly binds to the b-ZIP region of ATF-2 and potentiates transactivation of ATF-2 (Sano et al., 1998). However, E1A also has been demonstrated to suppress the CREB-mediated transcription by competing with p300/CBP-associated factor (P/CAF) for binding to p300/CBP (Yang et al., 1996). Moreover, it has been reported recently that ATF-2 has intrinsic histone acetyltransferase (HAT) activity as well as p300/CBP and P/CAF and that phosphorylation of ATF-2 controls its intrinsic HAT activity and its action on CRE-dependent transcription (Kawasaki et al., 2000). Further studies are necessary to dissect the molecu-

lar mechanisms of how these transcriptional cofactors work during differentiation into cardiomyocytes.

General Consideration

A speculative diagram of the regulatory cascade controlling differentiation of P19CL6 cells into cardiomyocytes is shown in Fig. 7 as a summary of our study. BMPs induce expression of some cardiac-specific genes and terminal cardiomyocyte differentiation through the Smad and the TAK1 pathways. Both pathways cooperatively activate the transcription factor ATF-2, resulting in the transactivation of some set of genes related to terminal cardiomyocyte differentiation. As we showed in the previous report (Monzen et al., 1999), some other DMSO-inducible factors independent of BMP signaling are necessary for the terminal differentiation (indicated as “X” and “Y” on Fig. 7), because only activation of BMP signaling is not sufficient to induce differentiation in the absence of DMSO. Thus, BMP signal transduction pathways and its downstream transcription factors are the central molecules of this regulatory network controlling cardiac differentiation as well as unknown DMSO-inducible factors. The identification of cardiac genes regulated by ATF-2 and signals induced by DMSO in this system will provide new insights into the understanding of the precise molecular mechanisms by which cardiomyocyte differentiation is regulated.

We thank Dr. H. Shibuya, Dr. D.B. Wilson, and Dr. E.N. Olson for providing plasmids, and Ms. C. Masuo and Ms. K. Abe for their excellent technical assistance.

This study was supported by a Grant-in-Aid for Scientific Research and Developmental Science Research from the Ministry of Education, Science and Culture of Japan and the Program for Promotion of Fundamental Studies in Health Sciences of the Organization for Drug ADR Relief, R&D Promotion and Product Review of Japan (to I. Komuro).

Submitted: 3 October 2000

Revised: 5 March 2001

Accepted: 3 April 2001

References

- Arceri, R.J., A.A.J. King, M.C. Simon, S.H. Orkin, and D.B. Wilson. 1993. Mouse GATA-4: a retinoic acid-inducible GATA-binding transcription factor expressed in endodermally derived tissues and heart. *Mol. Cell. Biol.* 13: 2235–2246.
- Attisano, L., and J.L. Wrana. 1998. Smads and Smads in TGF beta signalling. *Curr. Opin. Cell Biol.* 10:188–194.
- Bader, D., T. Masaki, and D.A. Fischman. 1982. Immunohistochemical analysis of myosin heavy chain during avian myogenesis in vivo and in vitro. *J. Cell Biol.* 95:763–770.
- Brown, D.J., M.R. DiChiara, K.R. Anderson, M.A. Gimbrone, Jr., and J.N. Topper. 1999. MEKK-1, a component of the stress (stress-activated protein kinase/c-Jun N-terminal kinase) pathway, can selectively activate Smad2-mediated transcriptional activation in endothelial cells. *J. Biol. Chem.* 274: 8797–8805.
- Busch, S.J., and P. Sassone-Corsi. 1990. Dimers, leucine zippers and DNA-binding domains. *Trends Genet.* 6:36–40.
- Chang, H., D. Huylebroeck, K. Verschuere, Q. Guo, M.M. Matzuk, and A. Zwijsen. 1999. Smad5 knockout mice die at mid-gestation due to multiple embryonic and extraembryonic defects. *Development.* 126:1631–1642.
- Frasch, M. 1995. Induction of visceral and cardiac mesoderm by ectodermal Dpp in the early *Drosophila* embryo. *Nature.* 374:464–467.
- Galvin, K.M., M.J. Donovan, D.A. Lynch, R.I. Meyer, R.J. Paul, J.N. Lorenz, V. Fairchild-Huntress, K.L. Dixon, J.H. Dunmore, M.A. Gimbrone, Jr., et al. 2000. A role for Smad6 in development and homeostasis of the cardiovascular system. *Nat. Genet.* 24:171–174.
- Gupta, S., D. Campbell, B. Dérillard, and R.J. Davis. 1995. Transcription factor ATF2 regulation by the JNK signal transduction pathway. *Science.* 267:389–393.
- Habara-Ohkubo, A. 1996. Differentiation of beating cardiac muscle cells from a derivative of P19 embryonal carcinoma cells. *Cell Struct. Funct.* 21:101–

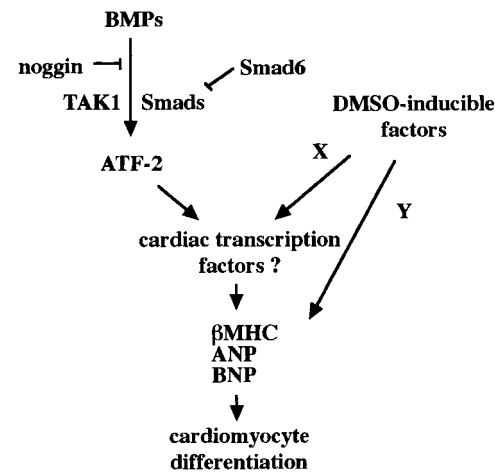


Figure 7. Schematic representation of the regulatory cascade controlling differentiation of P19CL6 cells into cardiomyocytes.

- 110.
- Hai, T., and T. Curran. 1991. Cross-family dimerization of transcription factors Fos/Jun and ATF/CREB alters DNA binding specificity. *Proc. Natl. Acad. Sci. USA.* 88:3720–3724.
- Han, Y., J.E. Dennis, L. Cohen-Gould, D.M. Bader, and D.A. Fischman. 1992. Expression of sarcomeric myosin in the presumptive myocardium of chicken embryos occurs within six hours of myocyte commitment. *Dev. Dyn.* 193: 257–265.
- Hanafusa, H., J. Ninomiya-Tsuji, N. Masuyama, M. Nishida, J. Fujisawa, H. Shibuya, K. Matsumoto, and E. Nishida. 1999. Involvement of the p38 mitogen-activated protein kinase pathway in transforming growth factor-β-induced gene expression. *J. Biol. Chem.* 274:27161–27167.
- Hata, A., G. Lagna, J. Massagué, and A. Hemmati-Brivanlou. 1998. Smad6 inhibits BMP/Smad1 signaling by specifically competing with the Smad4 tumor suppressor. *Genes Dev.* 12:186–197.
- Heldin, C., K. Miyazono, and P. ten Dijke. 1997. TGF-β signalling from cell membrane to nucleus through SMAD proteins. *Nature.* 390:465–471.
- Imamura, T., M. Takase, A. Nishihara, E. Oeda, J. Hanai, M. Kawabata, and K. Miyazono. 1997. Smad6 inhibits signaling by the TGF-β superfamily. *Nature.* 389:622–626.
- Ishida, W., T. Hamamoto, K. Kusanagi, K. Yagi, M. Kawabata, K. Takehara, T.K. Sampath, M. Kato, and K. Miyazono. 2000. Smad6 is a Smad1/5-induced smad inhibitor. Characterization of bone morphogenetic protein-responsive element in the mouse Smad6 promoter. *J. Biol. Chem.* 275:6075–6079.
- Kawasaki, H., L. Schiltz, R. Chiu, K. Itakura, K. Taira, Y. Nakatani, and K.K. Yokoyama. 2000. ATF-2 has intrinsic histone acetyltransferase activity which is modulated by phosphorylation. *Nature.* 405:195–200.
- Lagna, G., A. Hata, A. Hemmati-Brivanlou, and J. Massagué. 1996. Partnership between DPC4 and SMAD proteins in TGF-beta signalling pathways. *Nature.* 383:832–836.
- Lin, Q., J. Schwarz, C. Bucana, and E.N. Olson. 1997. Control of mouse cardiac morphogenesis and myogenesis by transcription factor MEF2C. *Science.* 276:1404–1407.
- Liu, F., and R. Green. 1994. Promoter targeting by adenovirus E1a through interaction with different cellular DNA-binding domains. *Nature.* 368:520–525.
- Lyons, I., L.M. Parsons, L. Hartley, R. Li, J.E. Andrews, L. Robb, and R.P. Harvey. 1995. Myogenic and morphogenetic defects in the heart tubes of murine embryos lacking the homeobox gene Nkx2-5. *Genes Dev.* 9:1654–1666.
- Macgregor, P.F., C. Abate, and T. Curran. 1990. Direct cloning of leucine zipper proteins: Jun binds cooperatively to the CRE with CRE-BP1. *Oncogene.* 5:451–458.
- Macias-Silva, M., S. Abdollah, P.A. Hoodless, R. Pirone, L. Attisano, and J.L. Wrana. 1996. MADR2 is a substrate of the TGFbeta receptor and its phosphorylation is required for nuclear accumulation and signaling. *Cell.* 87: 1215–1224.
- Maekawa, T., H. Sakura, C. Kanei-Ishii, T. Sudo, T. Yoshimura, J. Fujisawa, M. Yoshida, and S. Ishii. 1989. Leucine zipper structure of the protein CRE-BP1 binding to the cyclic AMP response element in brain. *EMBO (Eur. Mol. Biol. Organ.) J.* 8:2023–2028.
- Maekawa, T., F. Bernier, M. Sato, S. Nomura, M. Singh, Y. Inoue, T. Tokunaga, H. Imai, M. Yokoyama, A. Reimold, et al. 1999. Mouse ATF-2 null mutants display features of a severe type of meconium aspiration syndrome. *J. Biol. Chem.* 274:17813–17819.
- Massagué, J. 1998. TGF-beta signal transduction. *Annu. Rev. Biochem.* 67:753–791.

- Matsuda, S., T. Maekawa, and S. Ishii. 1991. Identification of the functional domains of the transcriptional regulator CRE-BP1. *J. Biol. Chem.* 266:18188–18193.
- Montano, X., and D. Lane. 1987. The adenovirus E1a gene induces differentiation of F9 teratocarcinoma cells. *Mol. Cell. Biol.* 7:1782–1790.
- Monzen, K., I. Shiojima, Y. Hiroi, S. Kudoh, T. Oka, E. Takimoto, D. Hayashi, T. Hosoda, A. Habara-Ohkubo, T. Nakaoka, et al. 1999. Bone morphogenetic protein induce cardiomyocyte differentiation through the mitogen-activated protein kinase kinase kinase TAK1 and cardiac transcription factors Csx/Nkx-2.5 and GATA-4. *Mol. Cell. Biol.* 19:7096–7105.
- Nascone, N., and M. Mercola. 1995. An inductive role for the endoderm in *Xenopus* cardiogenesis. *Development*. 121:515–523.
- Olson, E.N., and D. Srivastava. 1996. Molecular pathway controlling heart development. *Science*. 272:671–676.
- Reimold, A.M., M.J. Grusby, B. Kosaras, J.W. Fries, R. Mori, S. Maniwa, I.M. Clauss, T. Collins, R.L. Sidman, M.J. Glimcher, and L.H. Glimcher. 1996. Chondrodysplasia and neurological abnormalities in ATF-2-deficient mice. *Nature*. 379:262–265.
- Rosenquist, G.C., and R.L. Dehaan. 1966. Migration of precardiac cells in the chick embryo: a radioautographic study. *Carnegie Inst. Wash. Contrib. Embryol.* 38:111–121.
- Sano, Y., F. Tokitou, P. Dai, T. Maekawa, T. Yamamoto, and S. Ishii. 1998. CBP alleviates the intramolecular inhibition of ATF-2 function. *J. Biol. Chem.* 273:29098–29105.
- Sano, Y., J. Harada, S. Tashiro, R. Gotoh-Mandeville, T. Maekawa, and S. Ishii. 1999. ATF-2 is a common nuclear target of Smad and TAK1 pathways in transforming growth factor- β signaling. *J. Biol. Chem.* 274:8949–8957.
- Schultheiss, T.M., S. Xydas, and A.B. Lassar. 1995. Induction of avian cardiac myogenesis by anterior endoderm. *Development*. 121:4203–4214.
- Schultheiss, T.M., J.B.E. Burch, and A.B. Lassar. 1997. A role for bone morphogenetic proteins in the induction of cardiac myogenesis. *Genes Dev.* 11:451–462.
- Shibuya, H., H. Iwata, N. Masuyama, Y. Gotoh, K. Yamaguchi, K. Irie, K. Matsumoto, E. Nishida, and N. Ueno. 1998. Role of TAK1 and TAB1 in BMP signaling in early *Xenopus* development. *EMBO (Eur. Mol. Biol. Organ.) J.* 17:1019–1028.
- Shiojima, I., I. Komuro, T. Oka, Y. Hiroi, T. Mizuno, E. Takimoto, K. Monzen, R. Aikawa, H. Akazawa, T. Yamazaki, et al. 1999. Context-dependent transcriptional cooperation mediated by cardiac transcription factors Csx/Nkx-2.5 and GATA-4. *J. Biol. Chem.* 274:8231–8239.
- Smith, W.C., and R.M. Harland. 1992. Expression cloning of noggin, a new dorsalizing factor localized to the Spemann organizer in *Xenopus* embryos. *Cell*. 70:829–840.
- Strehler, E.E., V. Mahdavi, M. Periasamy, and B. Nadal-Ginard. 1985. Intronic positions are conserved in the 5' end region of myosin heavy-chain genes. *J. Biol. Chem.* 260:468–471.
- Takano, H., I. Komuro, T. Oka, I. Shiojima, Y. Hiroi, T. Mizuno, and Y. Yazaki. 1998. The Rho family G proteins play a critical role in muscle differentiation. *Mol. Cell. Biol.* 18:1580–1589.
- Takeda, J., T. Maekawa, T. Sudo, Y. Seino, H. Imura, N. Saito, C. Tanaka, and S. Ishii. 1991. Expression of the CRE-BP1 transcriptional regulator binding to the cyclic AMP response element in central nervous system, regenerating liver, and human tumors. *Oncogene*. 6:1009–1014.
- Velcich, A., and E.B. Ziff. 1989. The adenovirus-5 12S E1a protein, but not the 13S induces expression of endoA differentiation marker in F9 cells. *Oncogene*. 4:707–713.
- Winnier, G., M. Blessing, P.A. Labosky, and B.L. Hogan. 1995. Bone morphogenetic protein-4 is required for mesoderm formation and patterning in the mouse. *Genes Dev.* 9:2105–2116.
- Xu, X., Z. Yin, J.B. Hudson, E.L. Ferguson, and M. Frasch. 1998. Smad proteins act in combination with synergistic and antagonistic regulators to target Dpp responses to the *Drosophila* mesoderm. *Genes Dev.* 12:2354–2370.
- Yamaguchi, K., K. Shirakabe, H. Shibuya, K. Irie, I. Oishi, N. Ueno, T. Taniguchi, E. Nishida, and K. Matsumoto. 1995. Identification of a member of the MAPKKK family as a potential mediator of TGF- β signal transduction. *Science*. 270:2008–2011.
- Yang, X., V.V. Ogryzko, J. Nishikawa, B.H. Howard, and Y. Nakatani. 1996. A p300/CBP-associated factor that competes with the adenoviral oncoprotein E1A. *Nature*. 382:319–324.
- Zhang, H., and A. Bradley. 1996. Mice deficient for BMP2 are nonviable and have defects in amnion/chorion and cardiac development. *Development*. 122:2977–2986.
- Zhu, W., Y. Zou, R. Aikawa, K. Harada, S. Kudoh, H. Uozumi, D. Hayashi, Y. Gu, T. Yamazaki, R. Nagai, Y. Yazaki, and I. Komuro. 1999. MAPK superfamily plays an important role in daunomycin-induced apoptosis of cardiac myocytes. *Circulation*. 100:2100–2107.
- Zimmerman, L.B., J.D. Jesus-Escobar, and R.M. Harland. 1996. The Spemann organizer signal noggin binds and inactivates bone morphogenetic protein-4. *Cell*. 86:599–606.